

To be the partner of your success

**Kinco Automation (Shanghai) Ltd.**

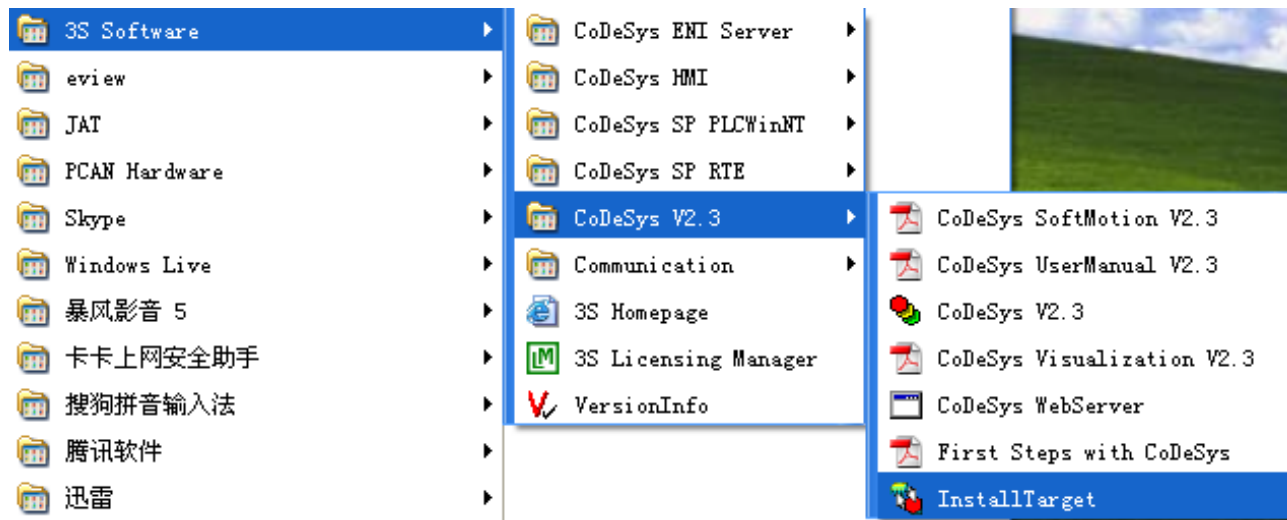
**Kinco**

To be the partner of your success

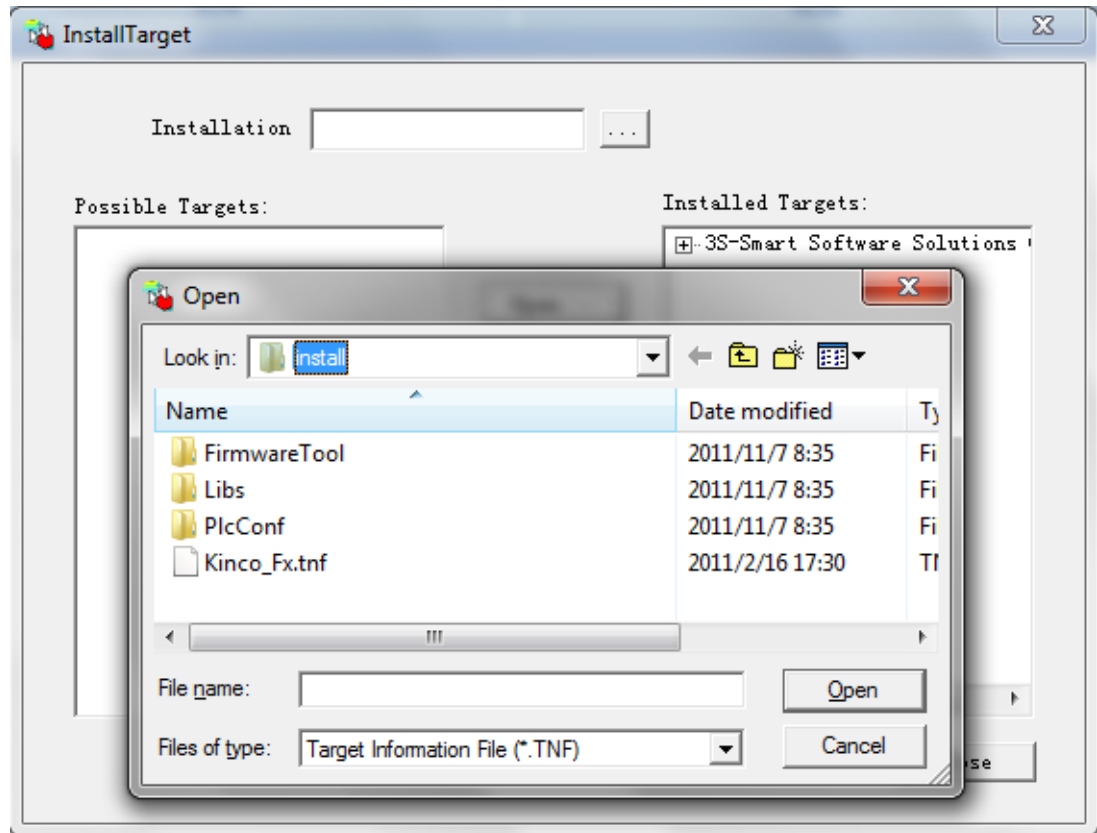
# **F1 PLC Fast Start**

# Step1 Install Target File

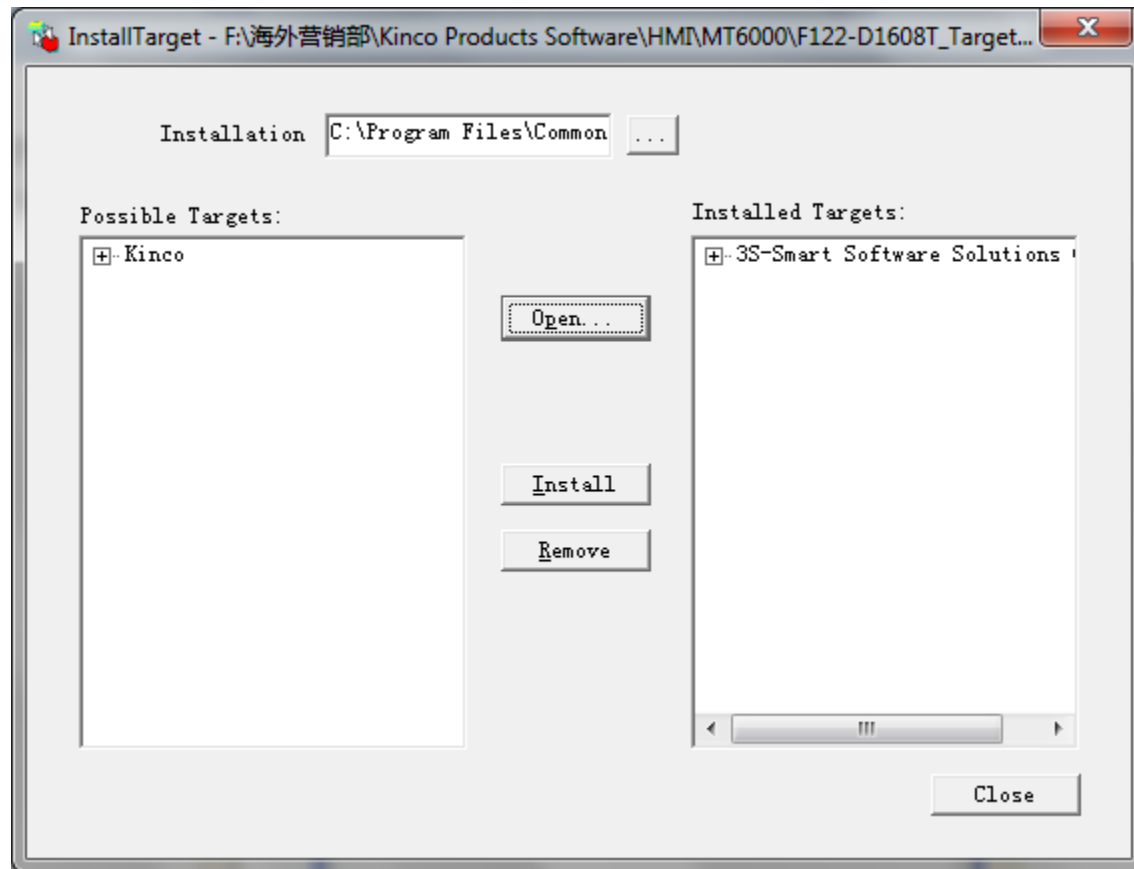
- Press "InstallTarget" in CoDeSys as following figure.



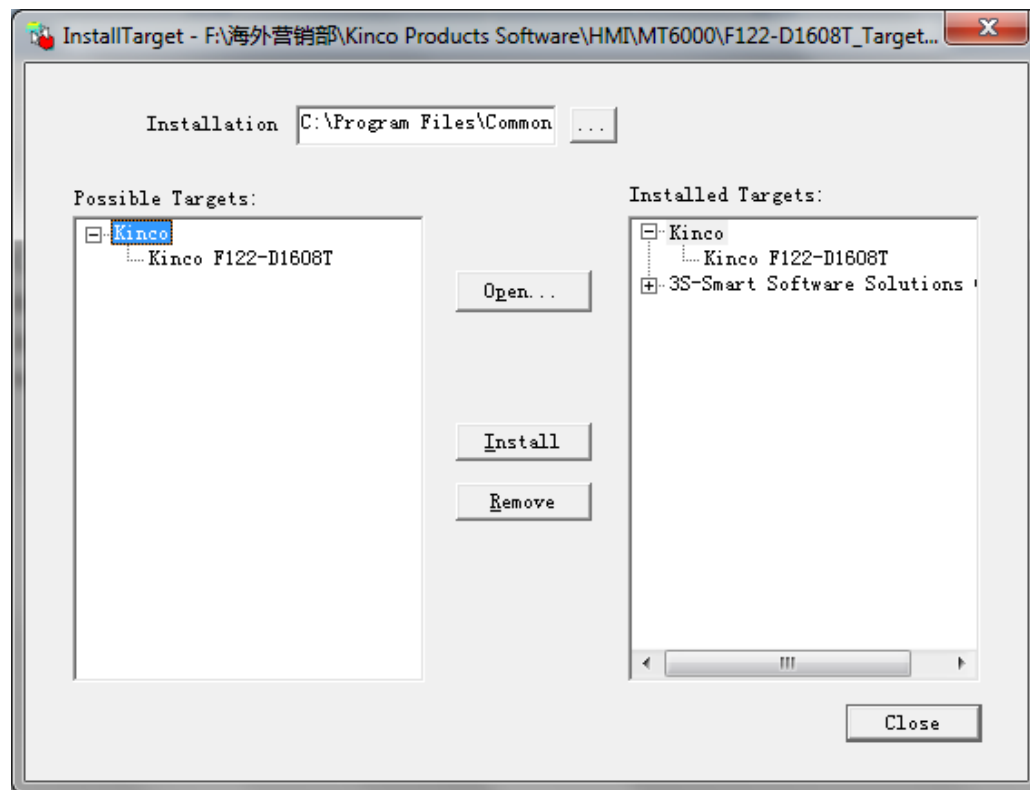
- Open the "InstallTarget" window, and click Open button. Then find the directory of the target file of F1. Choose the file \*.tnf in the directory and press Open as the figure on the right side.



- After opening the \*.tnf file, the window will show as following figure

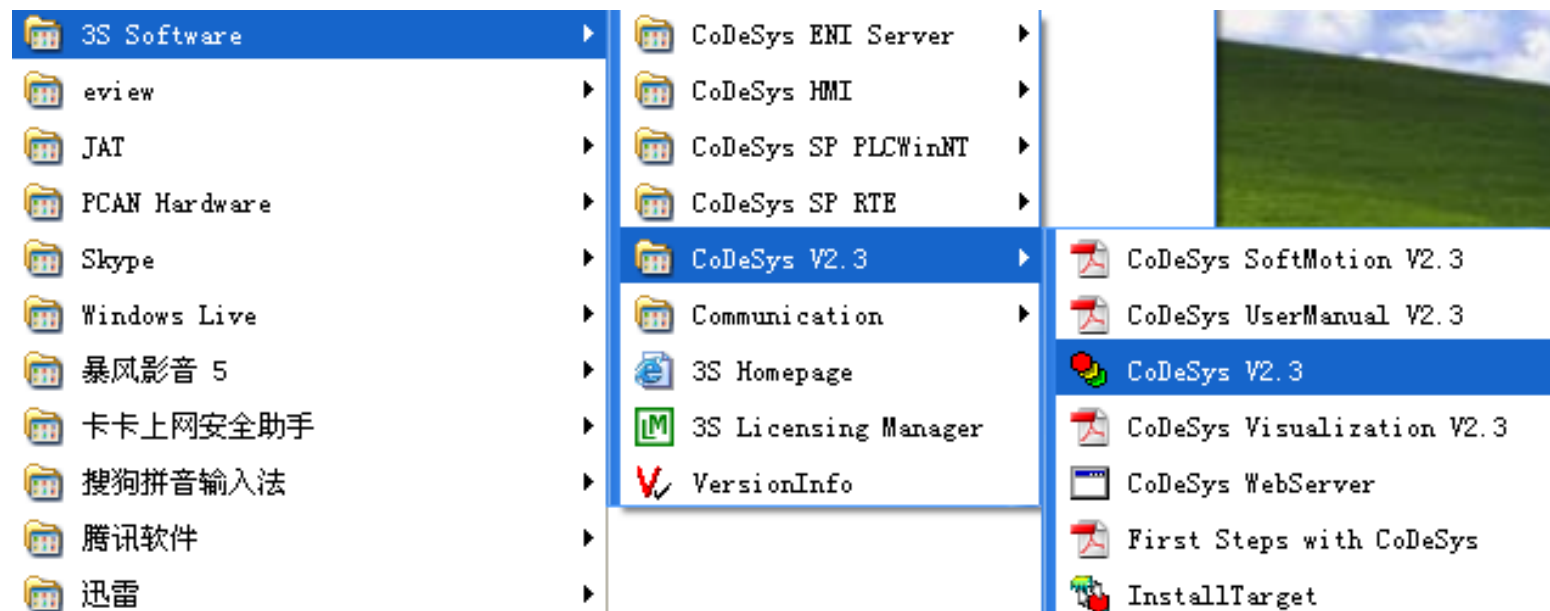


- Choose the file which open just now, then press “install” to install the target of F1 to the right window.

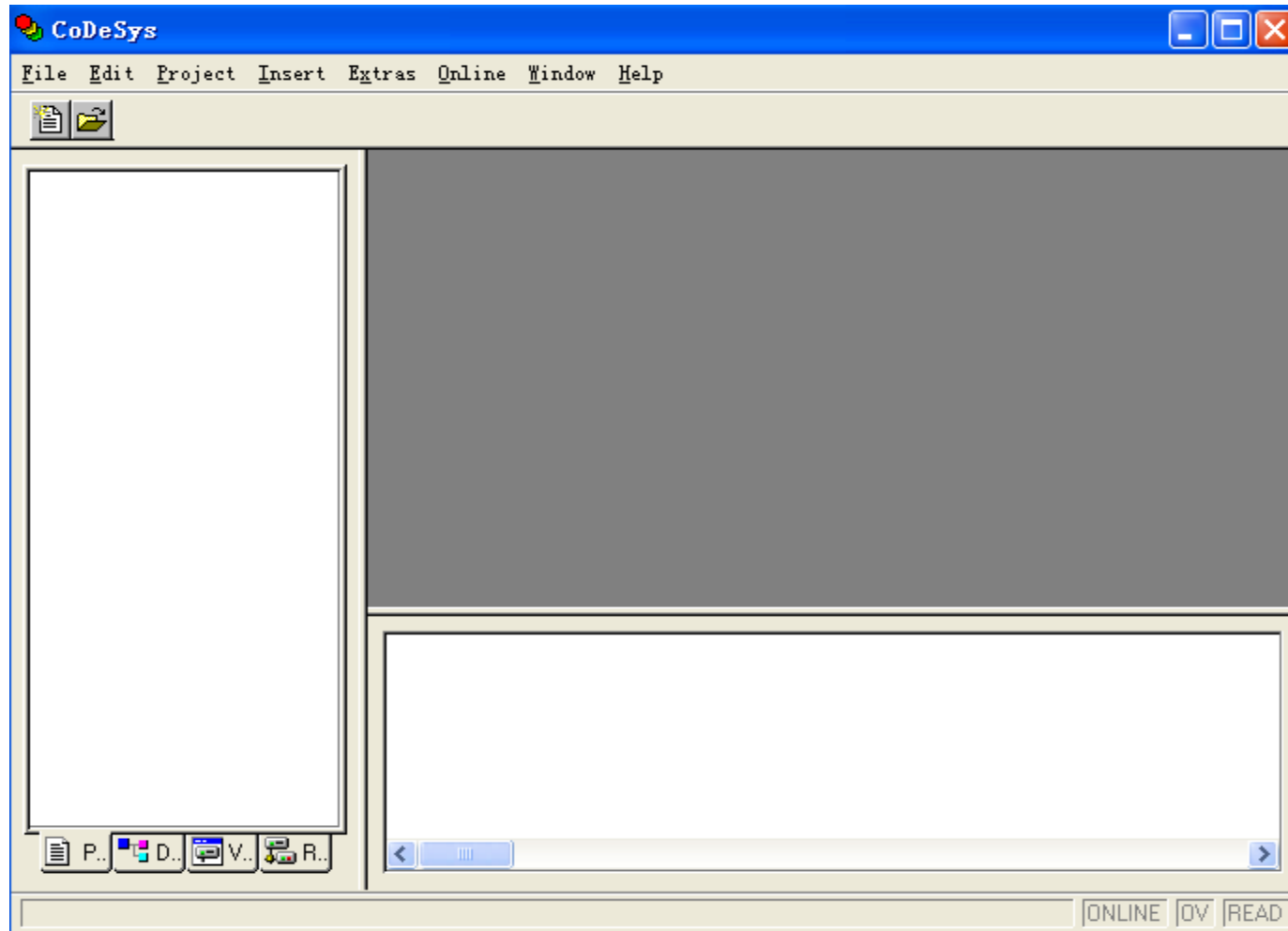


# Step 2 Programming

- Open Codesys V2.3, as following figure:

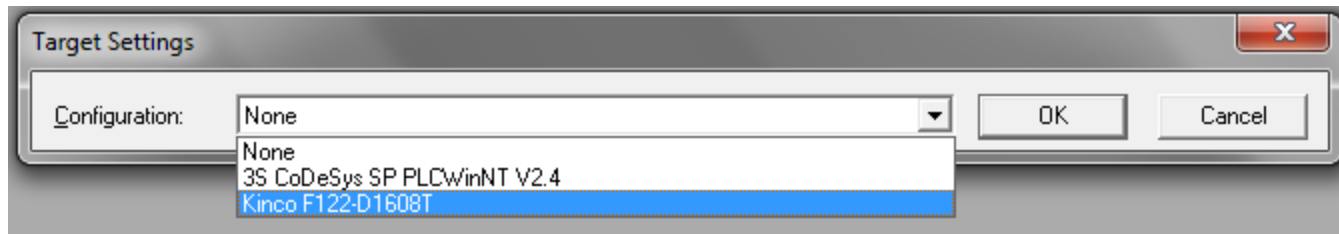


- Following figure is the interface of CoDeSys:

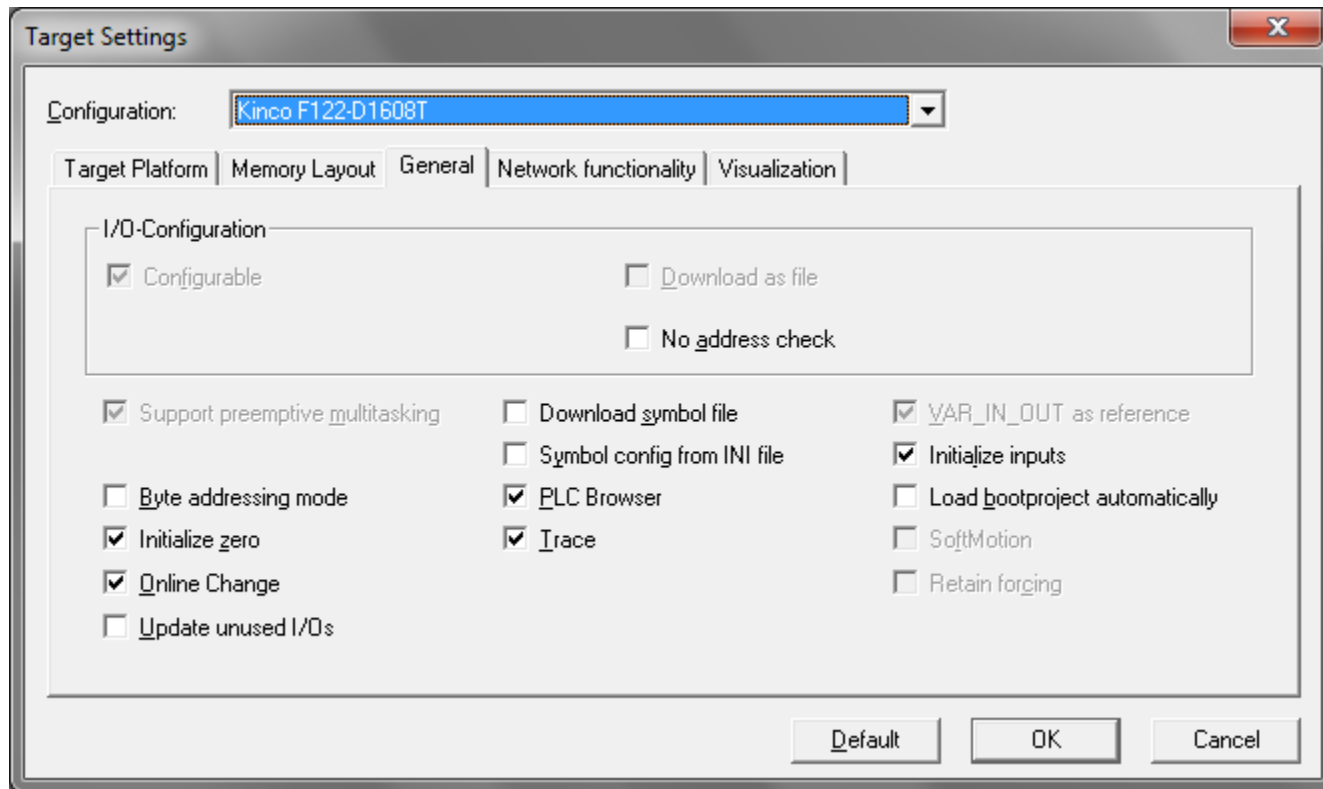




- Create a new project, it will popup following window, then choose F122-D1608T PLC.



- Press OK, it will popup following window. We can set all the parameters by default. Then press OK to finish the configuration.



- Choose a language of the POU. Here we choose “LD”, then press OK;

**New POU**

Name of the new POU:

Type of POU:

- ☒ Program
- ☐ Function Block
- ☐ Function

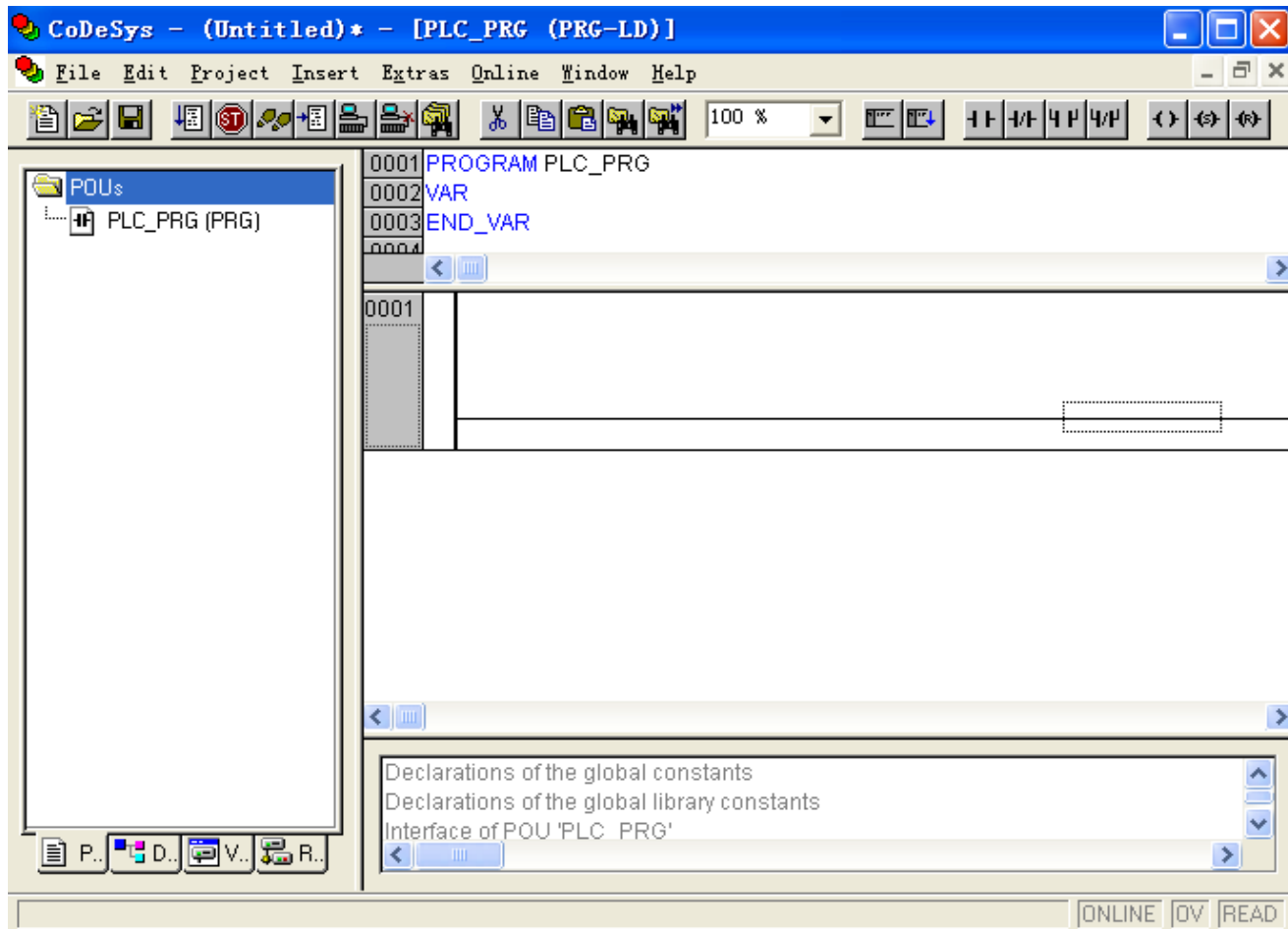
Return Type:  ...

Language of the POU:

- ☒ IL
- ☐ LD
- ☐ FBD
- ☐ SFC
- ☐ SI
- ☐ CFC

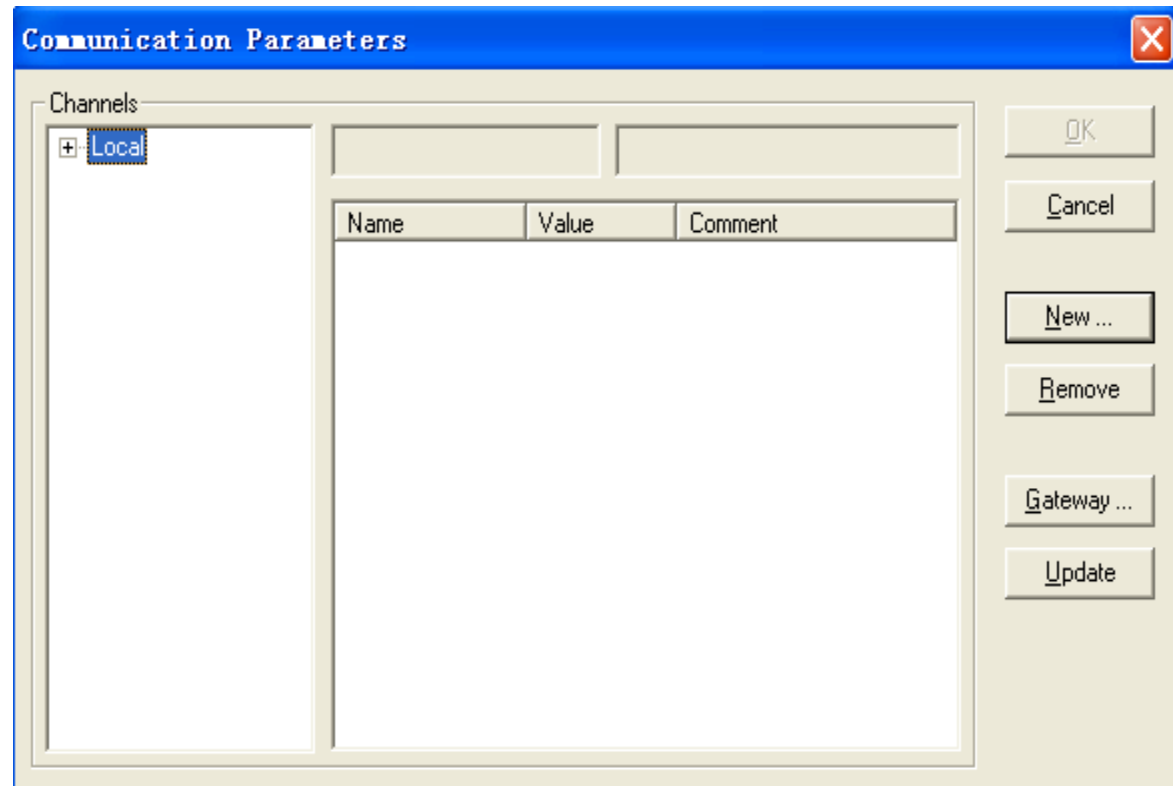
OK Cancel

- Following figure is the program interface of CoDeSys. Then we can begin to program.

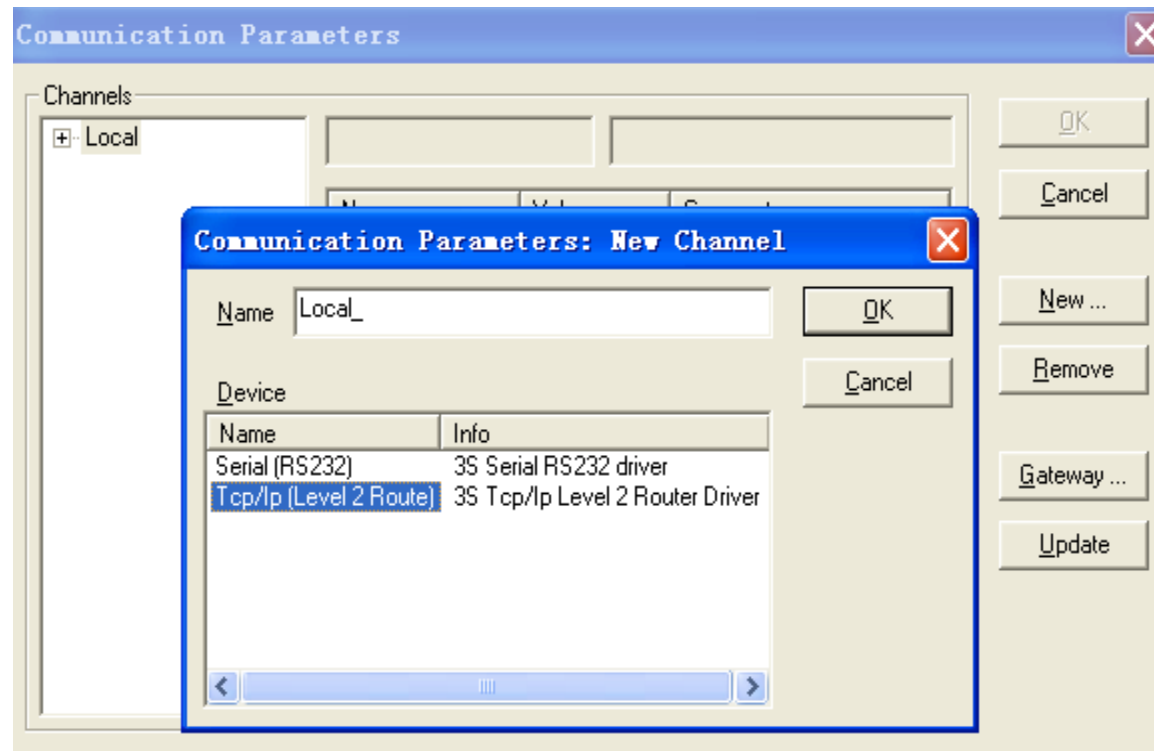


# Step 3 Communication Parameters

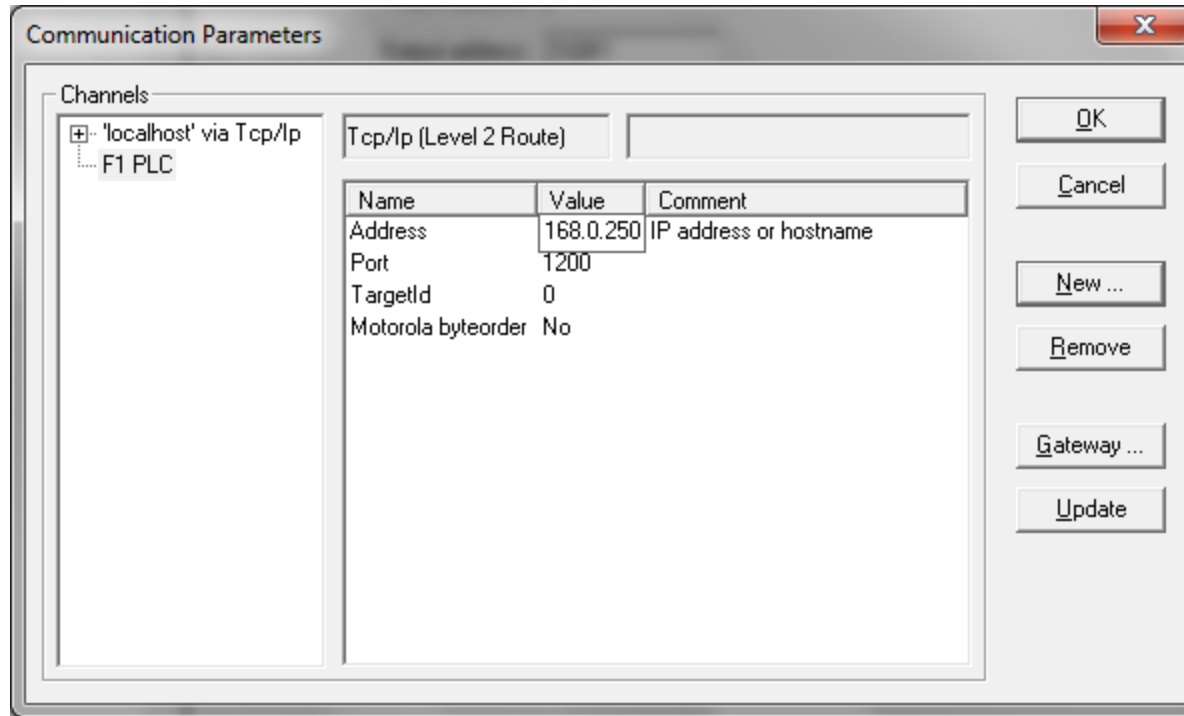
- When you need to download program to F1 PLC. First you need to set communication parameters as following figure.



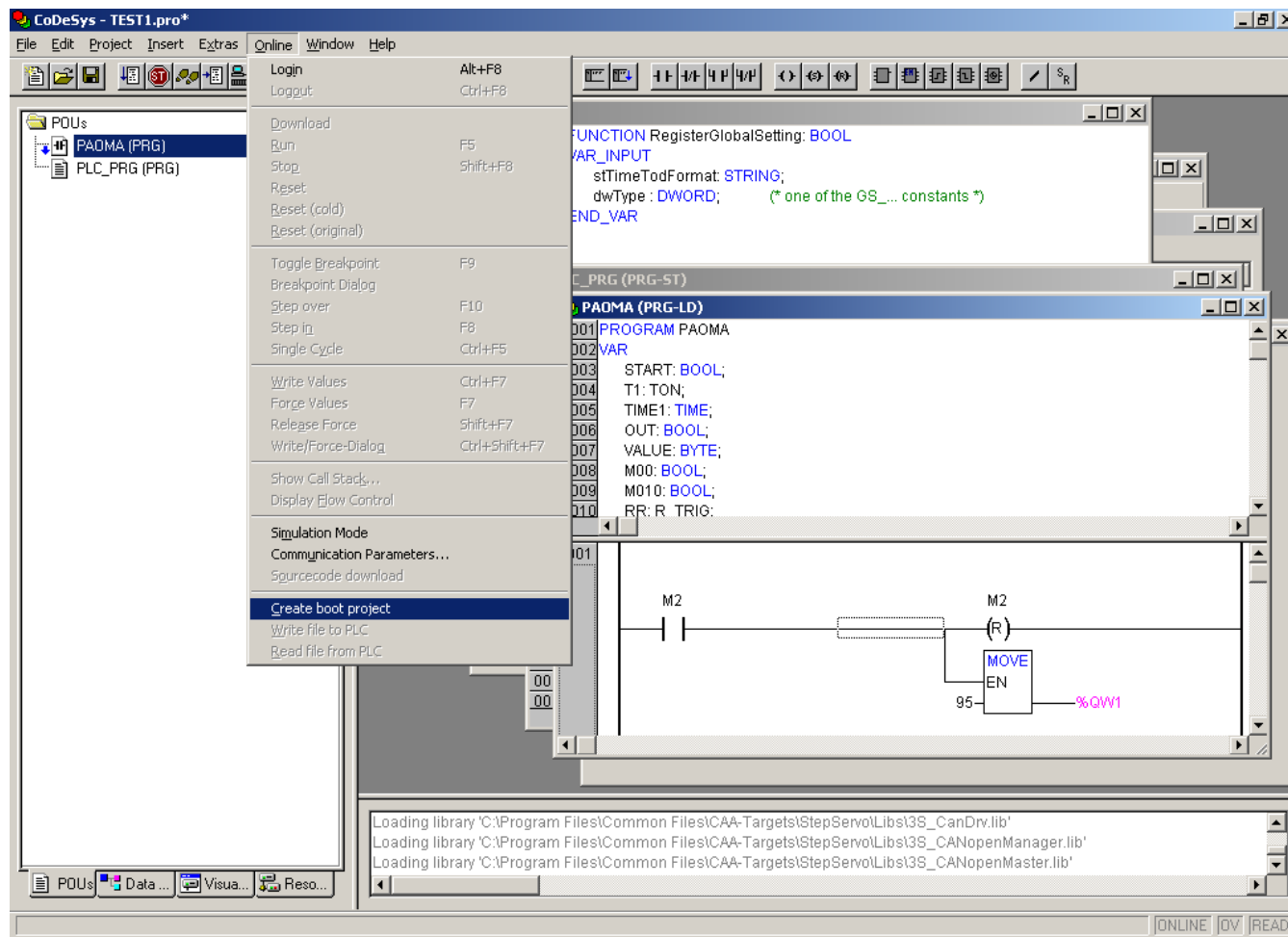
- Select communication port type.



- Input IP address.



- After finishing setting communication parameters, then click Online->Login to download program into F1 PLC, then click Online->Create boot project. Refer to following figure.





The Kinco logo is displayed in a bold, white, sans-serif font against a background of overlapping wavy shapes in shades of yellow and orange.

**Kinco**

To be the partner of your success

**Thank you!**

A solid red horizontal bar spans the width of the slide at the bottom.