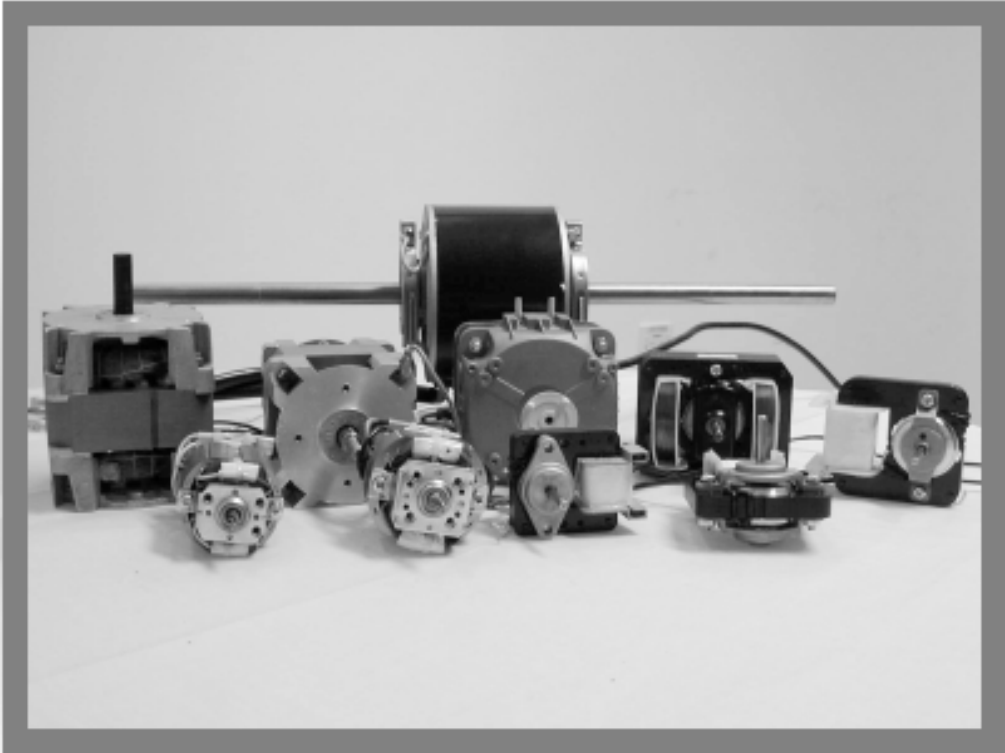
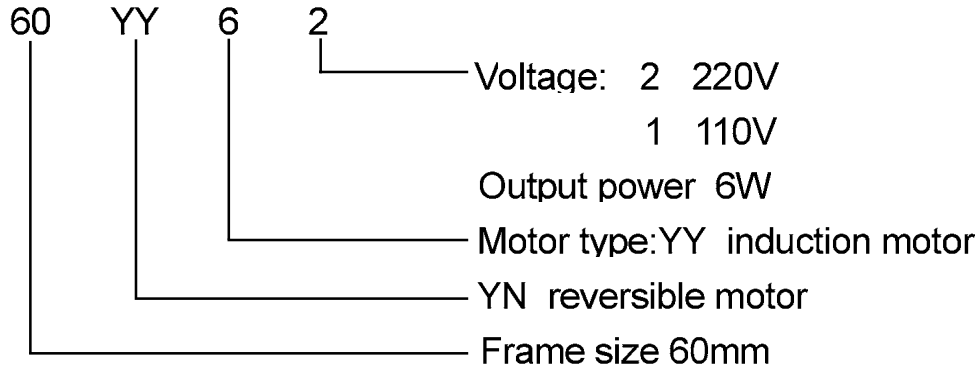


AC Induction and AC Synchronous Motors

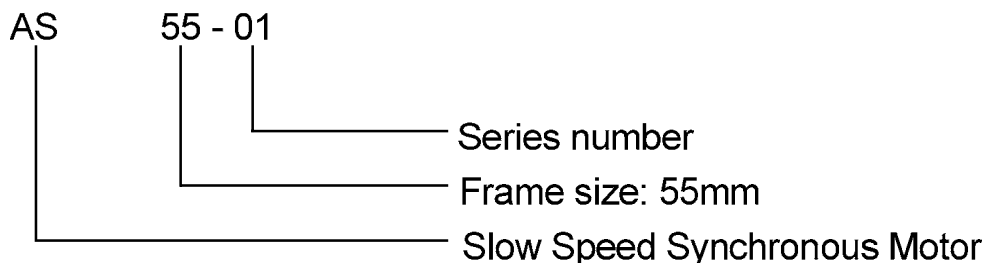
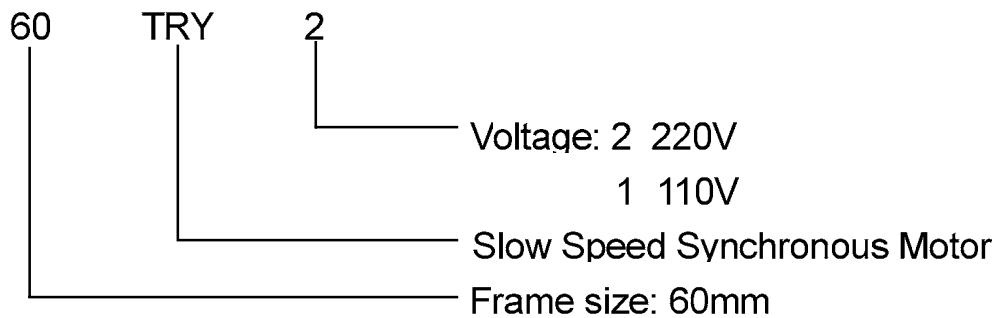


AC Motor

◆ Product Number Code For AC Single Phase Induction Motor



◆ Product Number Code For Slow Speed Synchronous Motor



AC MOTR

YY Series Induction gearmotor

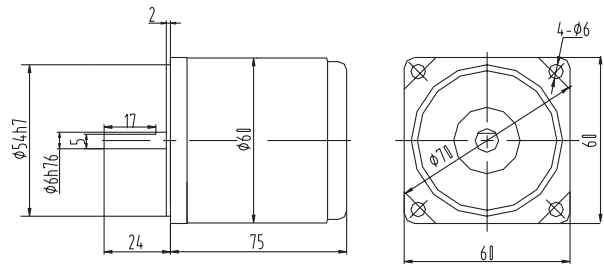
YN Series Reversible gearmotor

◆ Motor technical data

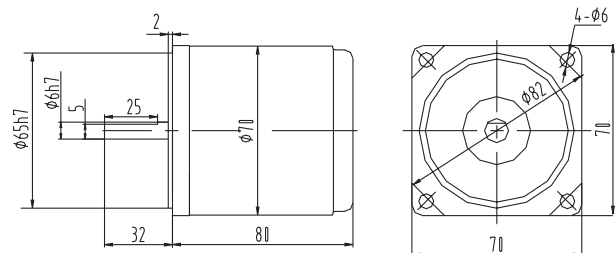
Type	Power W	Voltage V	Frequency Hz	Current A	Starting torque N.m	Rated speed N.m	Rated speed r/min	capacitor uF/VAC	operating mode
60YY6-2	6	220	50	0.10	0.045	0.046	1250	0.8/450	Cont
60YN6-2				0.11	0.055	0.049	1250	1.0/450	30min
60YY6-1	6	110	50	0.20	0.045	0.046	1250	2.5/250	Cont
60YN6-1			60	0.18	0.045	0.038	1500	2.5/250	Cont
70YY15-2	15	220	50	0.17	0.090	0.115	1250	1.2/450	Cont
70YN15-2				0.18	0.100	0.120	1250	1.5/450	30min
70YY15-1	15	110	50	0.35	0.090	0.115	1250	5/250	Cont
70YN15-1			60	0.34	0.090	0.096	1500	5/250	Cont
80YY25-2	25	220	50	0.27	0.140	0.191	1250	1.5/450	Cont
80YN25-2				0.29	0.142	0.192	1250	2.2/450	30min
80YY25-1	25	110	50	0.50	0.140	0.191	1250	6/250	Cont
80YN25-1			60	0.48	0.140	0.159	1500	6/250	Cont

◆ Dimensions

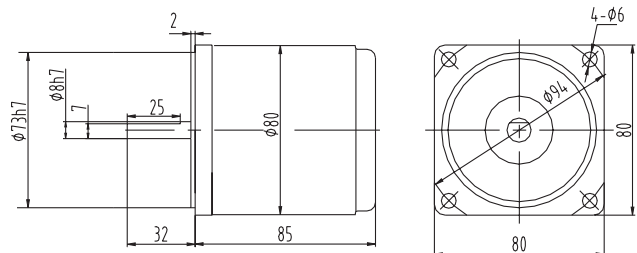
6W One-phase induction motor



15W One-phase induction motor



25W One-phase induction motor



AC MOTR

YY Series Induction gearmotor

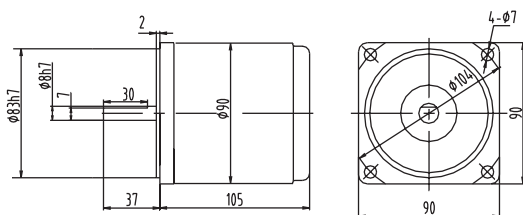
YN Series Reversible gearmotor

◆ Motor technical data

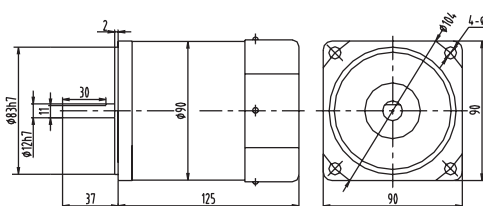
Type	Power W	Voltage V	Frequency Hz	Current A	Starting torque N.m	Rated speed N.m	Rated speed r/min	capacitor uF/VAC	operating mode
90YY40-2	40	220	50	0.35	0.220	0.294	1300	2.5/450	Cont
90YN40-2				0.36	0.250	0.300	1300	3.0/450	30min
90YY40-1	40	110	50	0.70	0.220	0.294	1300	10/250	Cont
90YN40-1			60	0.68	0.220	0.247	1550	10/250	Cont
90YY60-2F	60	220	50	0.50	0.340	0.441	1300	3.5/450	Cont
90YN60-2F				0.52	0.360	0.450	1300	4.5/450	30min
90YY60-1F	60	110	50	1.00	0.340	0.441	1300	15/250	Cont
90YN60-1F			60	1.00	0.340	0.370	1550	15/250	Cont
90YY90-2F	90	220	50	0.70	0.470	0.661	1300	5/450	Cont
90YN90-2F				0.72	0.540	0.675	1300	6/450	30min
90YY90-1F	90	110	50	1.45	0.470	0.661	1300	25/250	Cont
90YN90-1F			60	1.40	0.470	0.554	1550	25/250	Cont
100YY120-2F	120	220	50	0.95	0.720	0.882	1300	8/450	Cont
100YN120-2F				0.95	0.720	0.882	1300	8/450	Cont
100YY120-1F	120	110	50	2.10	0.720	0.882	1300	30/250	Cont
100YN120-1F			60	2.10	0.720	0.740	1550	30/250	Cont
100YY140-2F	140	220	50	1.05	0.760	1.029	1300	8/450	Cont
100YN140-2F				1.05	0.760	1.029	1300	8/450	Cont
100YY140-1F	140	110	50	2.30	0.760	1.029	1300	30/250	Cont
100YN140-1F			60	2.30	0.760	0.863	1550	30/250	Cont

◆ Dimensions

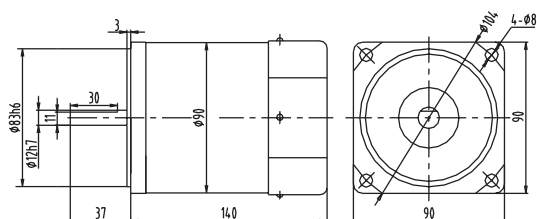
40W One-phase induction motor



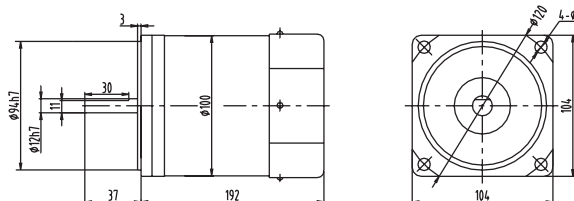
60W One-phase induction motor



90W One-phase induction motor



120W, 140W One-phase induction motor

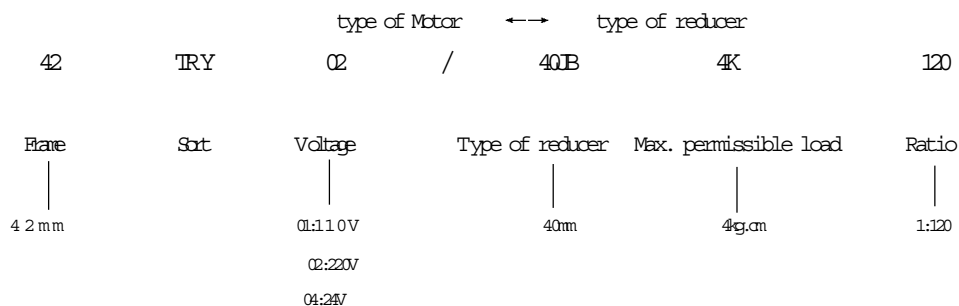


AC MOTR

42TRY/40JB4K
Capacitor split phase PM synchronous gearmotors



◆ Indications of the model number



◆ Motor technical Data

TYPE	Voltage VAC	Frequency Hz	Speed r/min	Pull-in torque g.cm	Pull-out torque g.cm	Capacitance μ F
42TRY02	220	50	250	260	310	0.1
42TRY04	24	50	250	260	310	8

◆ Gearmotor technical data

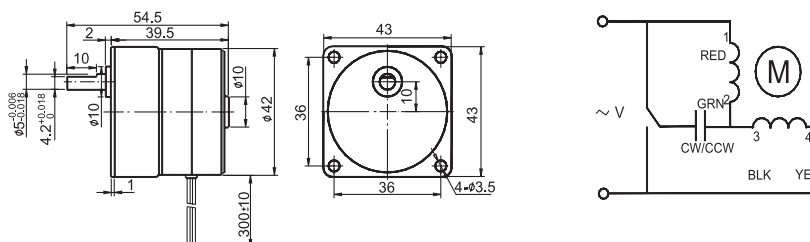
Reduction ratio	10	20	25	30	50	75	100	120	150
Number of gear trains	2	3	3	3	4	4	5	5	5
Speed r/min	25	12.5	10	8.3	5	3.3	2.5	2.1	1.6
Pull-in torque kg.cm	1.6	2.9	3.6	4	4	4	4	4	4
Pull-out torque kg.cm	2.1	3.8	4	4	4	4	4	4	4
Max. permissible load of gearhead kg.cm	1.5	3	3	3	4	4	4	4	4

Noise: ≤ 45dB Insulation class: E Weight: 0.3kg

◆ Use condition

Ambient Temperature : -20~60°C, Relative Humidity : <90%(25°C).

◆ Dimensions and wiring diagram



AC MOTR

60TRY-J

Capacitor split phase PM synchronous gearmotors



◆ Technical data

220VAC/50Hz

Type	Voltage VAC	Frequency Hz	capacitance uF	Duty	speed & torque (kg.cm)											
					3 rpm	5 rpm	7.5 rpm	10 rpm	15 rpm	20 rpm	25 rpm	30 rpm	40 rpm	50 rpm	60 rpm	100 rpm
60TRY2LA	220	50	0.27	S1(Continuous)	35	26	20	16	10	8.0	6.0	5.0	3.7	3.0	2.5	1.5
60TRY2LB				S1(Continuous)	40	37	27	21	14	11	8.2	7.0	5.0	4.2	3.5	2.0
60TRY2LC				S1(Continuous)	--	40	30	23	15	12	9.5	8.0	6.0	5.0	4.0	2.5
60TRY2DA			0.47	15min	40	37	27	21	14	11	8.2	7.0	5.0	4.2	3.5	2.0
60TRY2DB				15min	--	--	40	31	21	16	12	10	7.5	6.0	5.0	3.0
60TRY2DC				15min	--	--	--	40	26	20	15	14	9.0	7.5	6.5	3.5

110VAC/50Hz

Type	Voltage VAC	Frequency Hz	capacitance uF	Duty	speed & torque (kg.cm)											
					3 rpm	5 rpm	7.5 rpm	10 rpm	15 rpm	20 rpm	25 rpm	30 rpm	40 rpm	50 rpm	60 rpm	100 rpm
60TRY1LA	220	50	1.0	S1(Continuous)	35	26	20	16	10	8.0	6.0	5.0	3.7	3.0	2.5	1.5
60TRY1LB				S1(Continuous)	40	37	27	21	14	11	8.2	7.0	5.0	4.2	3.5	2.0
60TRY1LC				S1(Continuous)	--	40	30	23	15	12	9.5	8.0	6.0	5.0	4.0	2.5
60TRY1DA			2.2	15min	40	37	27	23	14	11	8.2	7.0	5.0	4.2	3.5	2.0
60TRY1DB				15min	--	--	40	31	21	16	12	10	7.5	6.0	5.0	3.0
60TRY1DC				15min	--	--	--	40	26	20	15	14	9.0	7.5	6.5	3.5

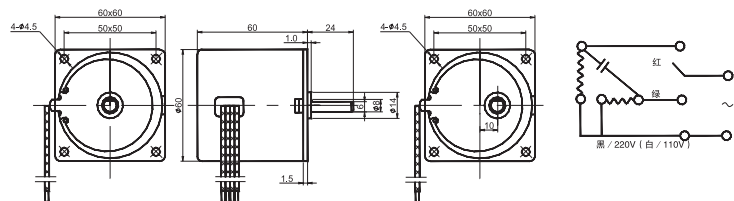
110VAC/60Hz

Type	Voltage VAC	Frequency Hz	capacitance uF	Duty	speed & torque (kg.cm)											
					3.6 rpm	6 rpm	9 rpm	12 rpm	18 rpm	24 rpm	30 rpm	36 rpm	48 rpm	60 rpm	72 rpm	120 rpm
60TRY1LA	110	60	1.0	S1(Continuous)	35	23	16	12	8.0	6.0	4.8	4.0	3.0	2.4	2.0	1.2
60TRY1LB				S1(Continuous)	40	34	24	18	12	9.0	7.2	6.0	4.5	3.6	3.0	1.7
60TRY1LC				S1(Continuous)	--	36	29	22	14	11	8.8	7.2	5.5	4.4	3.6	2.2
60TRY1DA			2.2	15min	40	34	24	18	12	9.0	7.2	6.0	4.5	3.6	3.0	1.7
60TRY1DB				15min	--	--	36	27	18	13	11	9.0	6.7	5.4	4.5	2.7
60TRY1DC				15min	--	--	--	36	21	16	13	12	8.0	6.4	5.3	3.2

◆ Use condition

Ambient Temperature : -20~60°C,Relative Humidity : <90%(25°C).

◆ Dimensions and wiring diagram



AC MOTR

60TRY-JB

Capacitor split phase PM synchronous gearmotors



◆ Technical data

Duty:S1(continuous)

Unit for pull-in torque:kg.cm

T _{type}	Voltage VAC	Frequency Hz	capacitor uF	Speed	Ratio											
				Pull-in torque	1:3.6	1:5	1:7.5	1:10	1:12.5	1:15	1:18	1:25	1:40	1:50	1:75	1:120
60TRY1LC	110	50	1.0	Speed	104	75	50	38	30	25	21	15	9.4	7.5	5	3.1
				Pull-in torque	2.0	2.8	4.3	5.7	7.1	7.6	9.1	13	20	23	34	50
		Speed		125	90	60	45	36	30	25	18	11	9	6	3.8	
		Pull-in torque		1.7	2.4	3.6	4.7	5.9	6.3	7.6	11	17	19	29	46	
	115	60		Speed	125	90	60	45	36	30	25	18	11	9	6	3.8
				Pull-in torque	1.7	2.4	3.6	4.7	5.9	6.3	7.6	11	17	19	29	46
60TRY2LC	220	50	0.27	Speed	104	75	50	38	30	25	21	15	9.4	7.5	5	3.1
				Pull-in torque	2.3	3.2	4.9	6.5	8.1	8.6	10	14	23	28	39	50

Short time running(15min)

Unit for pull-in torque:kg.cm

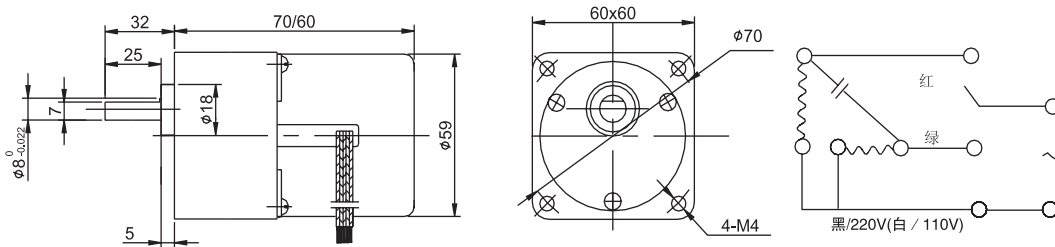
T _{type}	Voltage VAC	Frequency Hz	capacitor uF	Speed	Ratio											
				Pull-in torque	1:3.6	1:5	1:7.5	1:10	1:12.5	1:15	1:18	1:25	1:40	1:50	1:75	1:120
60TRY1LD	110	50	2.2	Speed	104	75	50	38	30	25	21	15	9.4	7.5	5	3.1
				Pull-in torque	3.9	5.5	8.2	11	14	15	17	24	39	44	50	50
		Speed		125	90	60	45	36	30	25	18	11	9	6	3.8	
		Pull-in torque		3.5	4.9	7.3	9.7	12	13	16	22	35	39	50	50	
	115	60		Speed	125	90	60	45	36	30	25	18	11	9	6	3.8
				Pull-in torque	3.5	4.9	7.3	9.7	12	13	16	22	35	39	50	50
60TRY2LD	220	50	0.56	Speed	104	75	50	38	30	25	21	15	9.4	7.5	5	3.1
				Pull-in torque	4.1	5.7	8.5	11	14	15	18	25	40	46	50	50

◆ Use condition

Ambient Temperature : -20~60°C,Relative Humidity :<90%(25°C).

◆ Dimensions and wiring diagram

1:3.6~12.5(length)060mm, 1:15~120(length)70mm



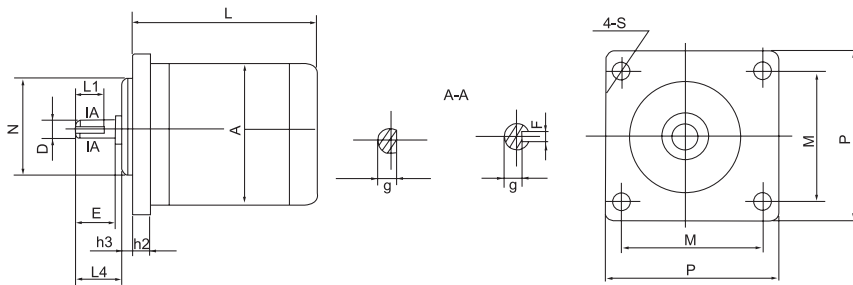
AC MOTOR

55mm/70mm/90mm/110mm/130mm/150mm Slow Speed Synchronous Motor

Specifications:

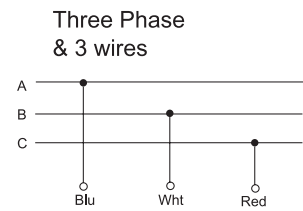
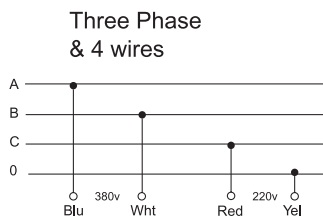
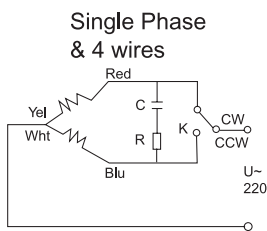
MODEL	VOLTS	Freq.	Speed	Input Current	Input Power	Max.Torque	Rated Torque	Start Torque	Load Inertia	Rotor Inertia	Weight	Capacitor	Resistance
	V	Hz	r/min	A	W	mN.m	mN.m	mN.m	g-cm ²	g-cm ²	kg	uF/V	Ω /w
AS55-01	220	50	60	0.075	16	360	300	200	600	100	0.7	0.47/400	1k/8
AS70-01	220	50	60	0.12	24	850	750	450	1500	700	1.6	0.8/400	1.5k/16
AS90-01	220	50	60	0.35	70	2400	2000	1400	9000	2400	3.2	2.7/400	680/50
AS110-01	220	50	60	0.56	110	4000	3500	2200	20000	5100	6.0	4/400	450/100
AS130-01	220	50	60	0.70	140	6400	5000	3200	30000	13000	9.0	5/400	450/100
AS150-01	220	50	60	1.25	240	6600	3500	3300	30000	23000	12.5	6/500	280/150

◆ Dimensions



Dimension Tolerance Model	A	N	d	e	L4	h2	h3	p	m	s	L	q	L1	F
	h2	h7	f7			h13					≤ JS18	h11		N9
AS55-01	55	42	6	16	18	6	3	58	48	4.5	65	5	12	
AS70-01	70	54		20	22	8		74	60	5.5	85		14	
AS90-01	90	70	8	22	24	10		94	76	6.6	102	7	16	
AS110-01	110	85	11	26	28	15	3	114	94	6.6	137	10	18	
AS130-01	130	100	16	30	32	16		134	110	9.0	140	13	20	
AS150-01	150	100	16	38	40	16	5	125	9.0	150	13	20	5	

◆ Wiring Diagram:



AC MOTOR

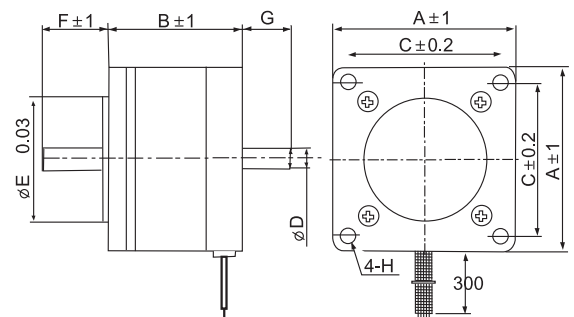
42mm/57mm/86mm Slow Speed Synchronous Motor

Specifications:

MODEL	Voltage	Frequency	Current	Torque		Speed	Residual Torque		Rotor Inertia	Capacitor	External resistor
	V	Hz	A	Oz-in	Kg-cm	RPM	Oz-in	Kg-cm	g-cm ²	μf	Ω /W
AS42-01	24	60	0.21	18	1.30	72	1.38	0.10	27	12	
AS57-01	115	60	0.10	22.2	1.60	72	2.08	0.15	120	1.2	
AS57-02	115	60	0.14	33.3	2.35	72	2.85	0.20	145	1.2	
AS57-03	115	60	0.10	51.3	3.70	72	3.47	0.25	300	1.2	
AS86-01	115	50	0.21	155	11.2	72	5.00	0.36	560	2.5	400/30

◆ Dimensions:

MODEL	FL42SY01	FL57SY01	FL57SY02/03	FL86SY01
A	42	57	57	86
B	38	41	56	62
C	31	47.1	47.1	69.6
D	5	6.35	6.35	9.5
E	22	38.1	38.1	73
F	24	20.5	20.5	30
G	10	20	20	20
H	M3	∅5	∅5	5.5



◆ Wiring Diagram:

