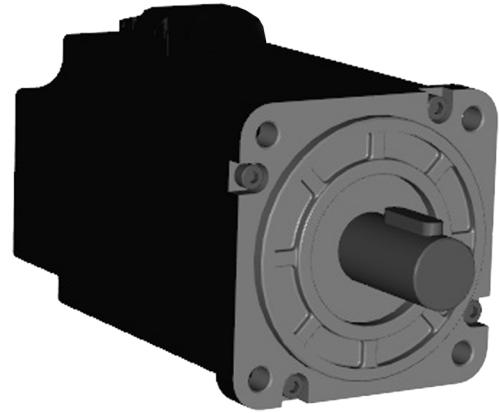


BLK32 Series - Brushless DC Motors



FEATURES

- **NEMA Size 32 BLDC Motors**
- **IP65 Rating**
- **Complete Protection from Dust Particles**
- **Can be Subjected to Wet Environments**
- **Long Life and Highly Reliable**
- **Cost Effective Replacement for Brush DC Motors**
- **Hall Sensor Feedback**
- **Available in Two Different Stack Lengths**



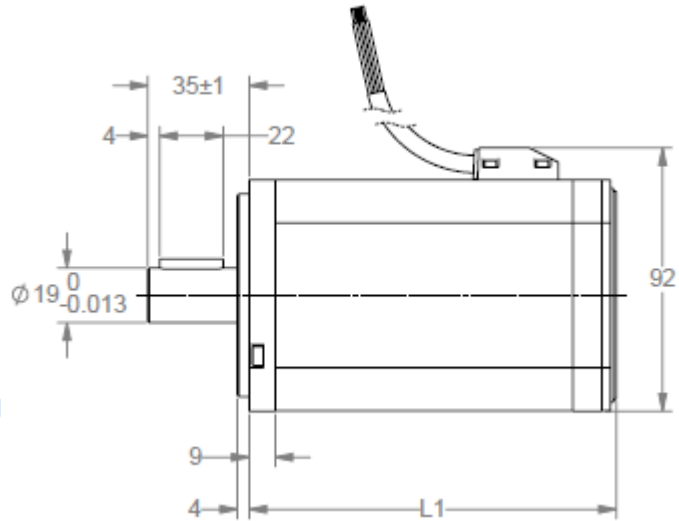
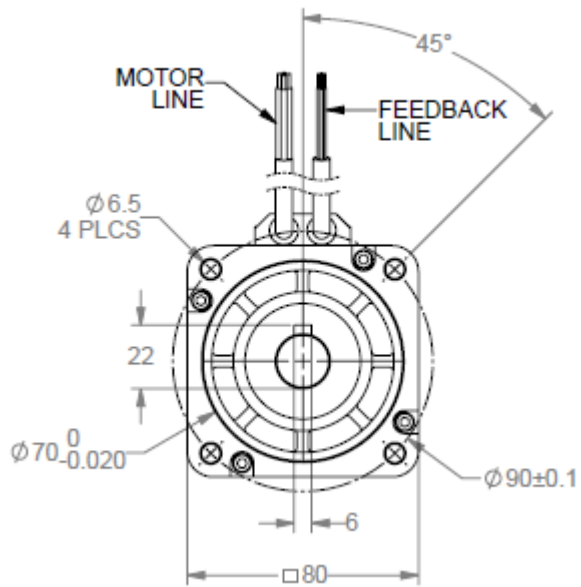
DESCRIPTION

The powerful BLK32 Series are NEMA 32 Brushless DC Motors that are IP65 rated which meet the splash-proof requirements for most applications. The BLK32 Series has complete protection from debris and dust particles. The sealed shafts further protect the motor providing longer life cycles. The BLK32 Series are square-bodied motors including an aluminum square-mounting flange to allow for easy installation, includes Class F insulation for higher temperature operation and has a rated torque of 293-450 oz-in. The BLK32 Series is available in two different stack lengths, has a rated speed of 3000 RPM and utilizes Hall Sensor Feedback.

SPECIFICATIONS

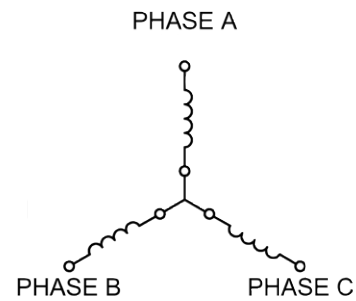
Model #	FRAME Size	Rated Voltage (VDC)	Rated Speed (RPM)	Rated Power (W)	Rated Torque (oz-in)	Peak Torque (oz-in)	Rated Current (A)	Peak Current (A)	Line to Line Resistance (ohms)	Line to Line Inductance (mH)	Torque Constant (oz-in/A)	Back EMF Voltage (V/kRPM)	Rotor Inertia (oz-in-sec ²)	Weight (lb)	"L" Length (in)
BLK321S-48V-3000	32	48	3000	650	293	879	18	54	0.16	0.5	16	7.99	.0192	6.83	5.00
BLK321S-310V-3000	32	310	3000	750	339	1019	3	9	1.47	9.3	130	34	1.36	6.83	5.12
BLK322S-48V-3000	32	48	3000	840	378	1134	23	69	.095	.344	13	8.66	.0269	8.16	7.78
BLK322S-310V-3000	32	310	3000	1000	450	1350	4.1	12.3	1.03	7.2	126	34	1.9	8.16	5.78

L010759



*Note: All units are mm

Motor Line	Feedback Line
YELLOW-(U)	RED-(VCC)
RED-(V)	BLUE-(GND)
BLACK-(W)	GRAY-(Hall A)
YELGRN	GREEN-(HALL B)
	WHITE=(HALL C)



STAR CONFIGURATION

Winding Type:	Star Connected, 8 Pole
Hall Angle:	120 degree electrical angle
Insulation resistance:	>= 100M Ohm, 500VDC
Insulation class:	Class F
Dielectric strength:	1500VDC, 1 min., 5mA