

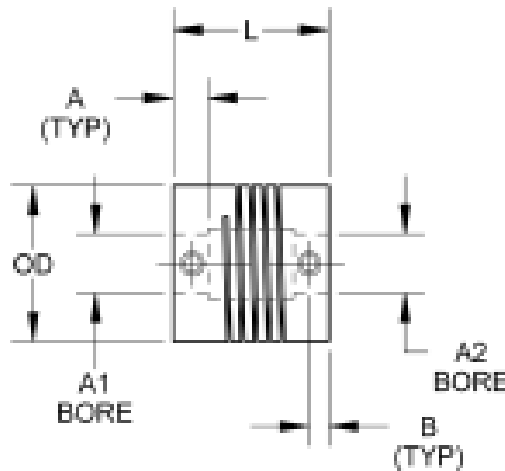
FEATURES

- Set Screw Couplings
- High-Quality Helical Design
- Corrosion Resistant Steel (CRES)
- Compensates for Shaft Misalignment
- No Backlash
- No Maintenance
- Wide Variety of Sizes



The CPL-HS Series is a high-quality helical design coupling line. These set screw type couplings compensate for motor shaft misalignment, and operate at high speeds, transmitting high torque at a constant velocity, as well as compensating for lateral, axial, and angular misalignments. There is no backlash and the CPL-HS Series never requires maintenance. Offered in a variety of outside diameter sizes, major and minor bore diameters, the CPL-HS

DIMENSION



SPECIFICATIONS

Model #	Bore A1/A2 (in)	Outside Diameter (in)	Torque (in-lb)	Length (in)	Dim A (in)	Dim B (in)	Screw Size	Screw Torque (in-lb)	Torsional Flexibility (deg/in-lb)	Inertia (lb-in-sec ²)	Weight (g)
CPL-HS050-125-125	0.125	0.5	3.5	0.5	0.13	0.07	4-40	5	1.34	6.9e-07	3.6
CPL-HS075-250-250	0.25	0.75	8	0.75	0.18	0.1	8-32	20	0.48	5.23e-06	12
CPL-HS075-5mm-5mm	0.197	0.75	9.1	0.75	0.18	0.1	8-32	20	0.48	5.23e-06	12
CPL-HS100-250-250	0.25	1	21	1	0.26	0.16	10-24	35	0.2	2.25e-05	30
CPL-HS100-8mm-8mm	0.313	1	19	1	0.26	0.16	10-24	35	0.28	2.25e-05	30
CPL-HS112-500-500	0.5	1.125	23	1.12	0.27	0.14	1/4-20	80	0.35	3.86e-05	39

Note: Minimum 50 pc. order required

L010559