

FEATURES

- Compatible with NEMA 42 Motors
- Backlash as low as 8 arc-min
- Thirteen Gear ratios from 3 to 64
- Patented precision clamping system
- Lifetime lubrication
- High durability
- 30,000 Hours Design Life
- 96% Efficient



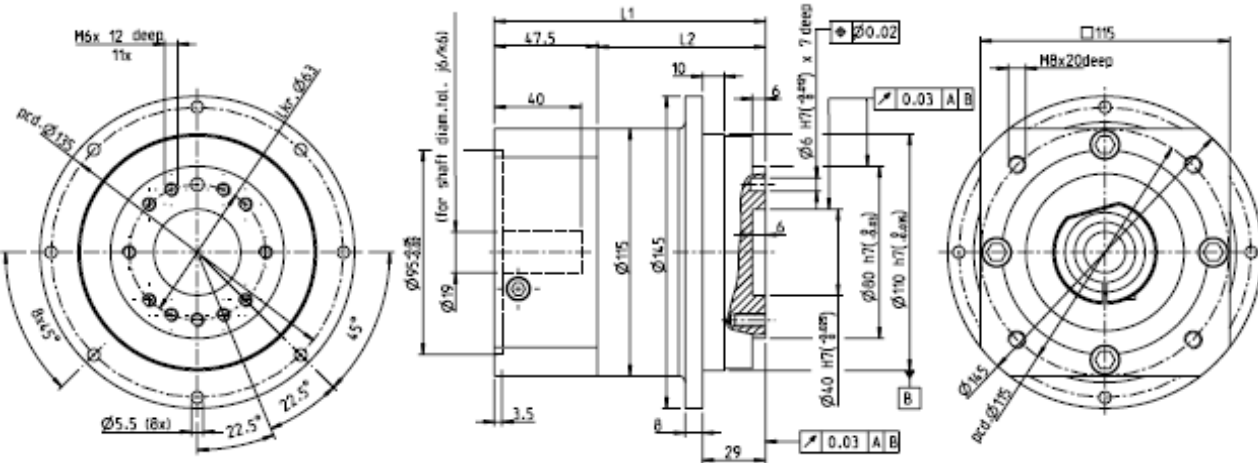
DESCRIPTION

The GBPN-110x-FS Series Planetary Gearbox offers you the precision you need at the prices you want! This Planetary Gearbox is designed with the highest torque density possible for motion control, automation, and robotic applications requiring a compact solution. This planetary gearbox series is an ideal match for the NEMA 42 frame size as well as your servo, stepper, brushless, AC or DC motors. Built with the design goal of offering a cost effective product without sacrificing quality, you will find that this Planetary Gearbox offers you an extraordinary value. You will find online prices on this website along with all the information you need to know to select the perfect Planetary Gearbox for your applications.

SPECIFICATIONS

Model #	Gear Ratio (X:1)	Rated Output Torque (oz-in)	Max Output Torque (oz-in)	Rated Input Speed (RPM)	Maximum Input Speed (RPM)	Stages	Backlash Maximum (arcmin)	L1 Length (mm)	L2 Length (mm)	Weight (lbs)
GBPN-1101-FS-003-xxxxx-yyy	3	16288	32576	4000	6500	1	8	141.3	77.5	15.4
GBPN-1101-FS-004-xxxxx-yyy	4	21952	43904	4000	6500	1	8	141.3	77.5	15.4
GBPN-1101-FS-005-xxxxx-yyy	5	27616	55232	4000	6500	1	8	141.3	77.5	15.4
GBPN-1101-FS-008-xxxxx-yyy	8	16992	33984	4000	6500	1	8	141.3	77.5	15.4
GBPN-1102-FS-009-xxxxx-yyy	9	33984	67968	4000	6500	2	12	168.3	104.5	19.8
GBPN-1102-FS-012-xxxxx-yyy	12	36816	73632	4000	6500	2	12	168.3	104.5	19.8
GBPN-1102-FS-015-xxxxx-yyy	15	32560	65120	4000	6500	2	12	168.3	104.5	19.8
GBPN-1102-FS-016-xxxxx-yyy	16	36816	73632	4000	6500	2	12	168.3	104.5	19.8
GBPN-1102-FS-020-xxxxx-yyy	20	36816	73632	4000	6500	2	12	168.3	104.5	19.8
GBPN-1102-FS-025-xxxxx-yyy	25	32560	65120	4000	6500	2	12	168.3	104.5	19.8
GBPN-1102-FS-032-xxxxx-yyy	32	36186	72372	4000	6500	2	12	168.3	104.5	19.8
GBPN-1102-FS-040-xxxxx-yyy	40	32560	65120	4000	6500	2	12	168.3	104.5	19.8
GBPN-1102-FS-064-xxxxx-yyy	64	16992	33984	4000	6500	2	12	168.3	104.5	19.8

L010616



Radial Load:	540 lbs - Force	Axial Load:	473 lbs - Force
Operating Temperature:	-13° to 194° F	Iso Output:	9409
Efficiency:	94-96%	IP Rating:	IP54/55
Lubrication:	Synthetic Greese Kluberplex BEM 34-132"	Noise Level:	65 dBA

### Matching the Gearbox to Your Motor

There are a few details that you need to consider before purchasing a gearbox. The gearbox must be manufactured to match the motor's bolt hole circle, pilot diameter, shaft diameter, and shaft length. This is handled by a code in the last two sections of the part number. For instance, in the part number GBPN-1101-FS-003-AA421-750, the "AA421" is for an Anaheim Automation NEMA 42 Motor pilot and the shaft length. The "750" is for the shaft diameter of 0.750". For non standard Anaheim Automation or custom motors contact factory for complete part number.

Parameter	Range	Typical
Input Shaft Diameter	16mm to 28mm	"750" - 19.05mm shaft diameter
Input Shaft Length	56mm max	"AA421" - 55.63mm
Pilot	55mm to 110mm	"AA421" - 55.52mm
Bolt Hole Circle	70mm to 145mm	"AA421" - 125.72mm