

EMJ 80mm Series Servo Motor



FEATURES

- **Medium Inertia**
- **Peak Torque up to 300% of Rated Torque**
- **Peak Current up to 300% of Rated Current**
- **Speed of up to 4,500 RPM**
- **2,500 PPR Incremental Encoder Attached**
- **Totally Enclosed, Self-Cooled**
- **Power Ratings up to 750 to 1000 Watts**
- **Optional Brake and Oil Seal**
- **Long Life and Highly Reliable**
- **Neodymium-Iron-Boron Magnets (NdFeB)**
- **CE Certified**



DESCRIPTION

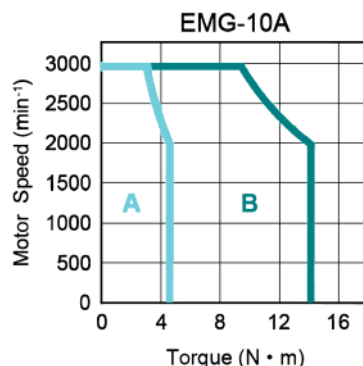
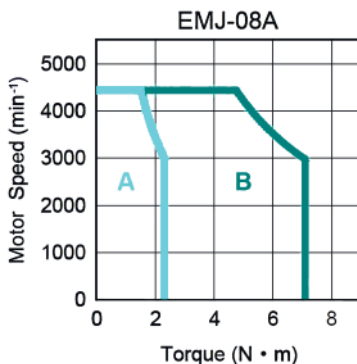
Anaheim Automation's all Digital AC Servo motors offers a simple solution to any servo application. These AC Servo motors come equipped with a 2500 counts-per-revolution encoder. They come in two different stack lengths to provide you with just the right torque for your application. Our AC Servo motors provide industrial motion control applications with medium inertia to attain a great combination of speed and positioning capability.

Anaheim Automation offer your a low cost, high quality, easy to use AC Servo motor and driver combination. We pride ourselves with our great customer service, and professional application assistance. These AC Servo motors offer a cost effective solution to many velocity and position controlled application.

SPECS

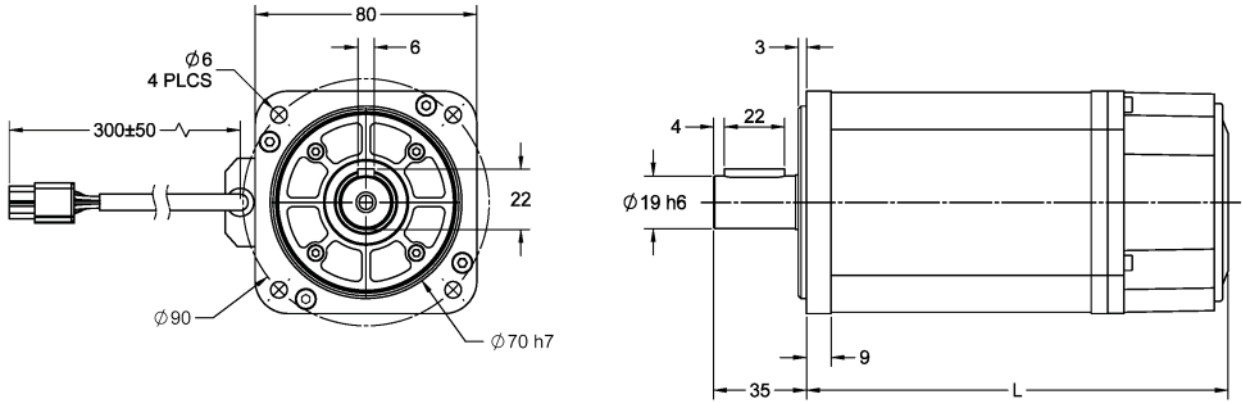
Model #	Rated Torque (oz-in)	Rated Power (Watts)	Max Speed (rpm)	Rated Speed (rpm)	Rated Current (A rms)	Max Current (A rms)	Inertia (oz-in-sec ²)	Electric Time Constant T _E (ms)	Back EMF Voltage K _E (V/krpm)	Torque Constant K _T (oz-in/A)	Resistance (ohms)	Weight (lbs)
EMJ-08APAx	338	450	4500	3000	4.0	12	0.0191	11.0	39	86.8	2	7.72
EMJ-10APAx	450	1000	4500	3000	5.3	15.9	0.0246	9.9	38.4	86.8	1.6	9.93

TORQUE VS SPEED



A: Continuous Working Area
B: Repeatedly Working Area

L010735



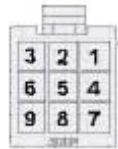
Model #	L
EMJ-08APAx	191
EMJ-10APAx	211

Note: All Dimensions in millimeters
 Brake Option adds 40mm to L. Contact factory for new part number.

Encoder Connector Specification

Plug:
172169-1 (AMP)

Plug:
170359-3 (AMP)



Pin No.	Signal	Color
1	A+	Blue
2	B+	Green
3	C+	Yellow
4	A-	Blue/Black
5	B-	Green/Black
6	C-	Yellow/Black
7	PG5V	Red
8	PG0V	Black
9	FG	Shield

Motor Connector Specification

Plug:
172167-1 (AMP)

Plug:
170360-1 (AMP)



Pin No.	Signal	Color
1	U	Red
2	V	Blue
3	W	White
4	FG	Green/Yellow

Brake Connector Specification

Plug:
172165-1 (AMP)

Plug:
170360-1 (AMP)



Pin No.	Signal	Color
1	B1	White
2	B2	Blue

Power Requirement 220VAC	Vibration: 49m/s ²	Running Air Pressure: 86-106 kPa
Insulation Class: F	Ambient Humidity: 20 to 80% RH	Insulation Voltage Endurance: AC 1800V, 50Hz, 1min
Ambient Temp: 0° to 40° C	IP Rating: IP65	Insulation Impedance: Not Less than 50M Under Normal Conditions
Running Temp: -25° to 40° C	Running Humidity: Not more than 90%, under 25°C	