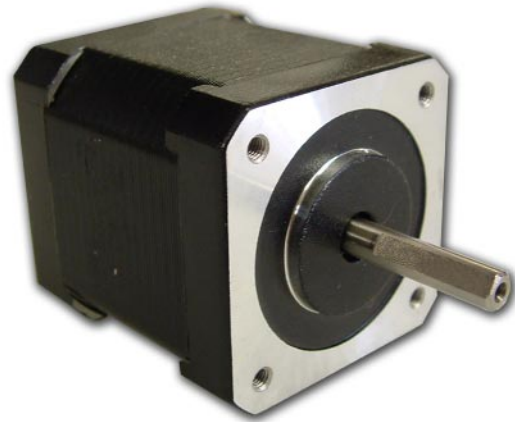


# 17L Series - High Torque Step Motors



## FEATURES

- NEMA 17 Frame Size
- 1.8° Step Angle (0.9° and 3.6° also Available)
- High Torque - Up to 62 oz-in
- High Step Accuracy and Resolution
- Low Vibration and Noise
- Can be Customized for
  - Winding Current
  - Shaft Options
  - Cables and Connectors
- RoHS Compliant



## DESCRIPTION

The 17L Series High Torque Step Motors offer a great value without sacrificing quality. These motors were designed to offer the highest possible torque while minimizing vibration and audible noise. A broad line of motor windings and stack lengths are available off-the-shelf, or the motors can be customized to fit your machine requirements. We can customize the winding to perfectly match your voltage, current, and maximum operating speed for maximum flexibility.

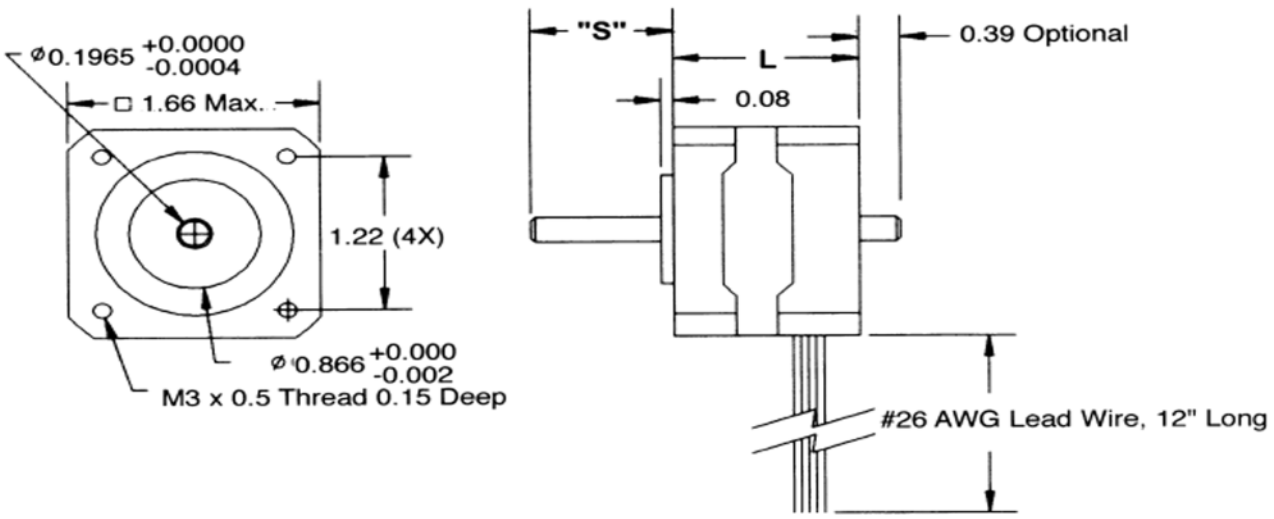
**See Accessories on this website for optional motor adders such as encoders, cables and connectors. For gearbox options, see Gearboxes. See compatible drivers for the 17L Series: MBC15081 and MBC25081TB**

## SPECIFICATIONS

Model #	NEMA Size	Bipolar Torque (oz-in)	Bipolar Current (A)	Bipolar Inductance (mH)	Rotor Inertia (oz-in-sec <sup>2</sup> )	Shaft Diameter (in)	# of Lead Wires	Weight (lbs)	L Length (in)
17L002DLW8	17	38	0.70	6	.00030	0.2	8	0.44	1.22
17L002S-LW8	17	38	0.70	6	.00030	0.2	8	0.44	1.22
17L102D-LW8	17	63	0.70	18	.00060	0.2	8	0.58	1.50
17L102S-LW8	17	63	0.70	18	.00060	0.2	8	0.58	1.50
17L202D-LW8	17	77	0.70	22	.00070	0.2	8	0.76	1.77
17L202S-LW8	17	77	0.70	22	.00070	0.2	8	0.76	1.77
17L203D-LW8	17	77	1.10	8	.00070	0.2	8	0.76	1.77
17L203S-LW8	17	77	1.10	8	.00070	0.2	8	0.76	1.77

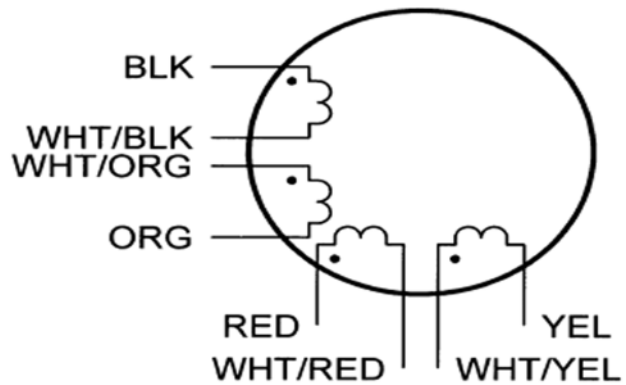
Notes: All Shafts have a flat unless otherwise noted. The 7th character "S" denotes a single shaft, use "D" for double shaft. Double shafts include encoder mounting provisions. Custom cables, connectors, and windings are available upon request.

L010071



Note 1: Double shaft option only.

(All units are inches)



DIMENSION

WIRING INFORMATION