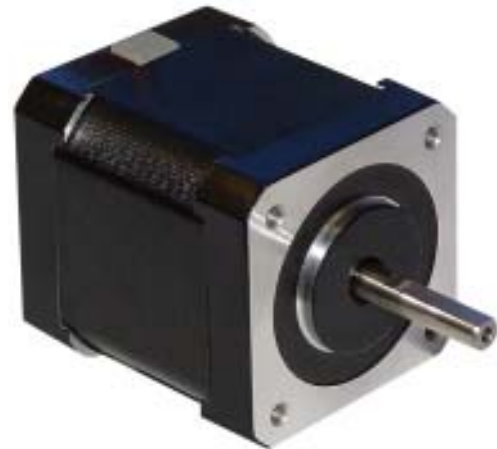


17Y Series - High Torque Step Motors



FEATURES

- **NEMA 17 Frame Size**
- **1.8° Step Angle (0.9° and 3.6° also available)**
- **High Torque - Up to 100 oz-in**
- **High Step Accuracy and Resolution**
- **Low Vibration and Noise**
- **Can be Customized for**
 - Winding Current
 - Shaft Options
 - Cables and Connectors
- **CE Certified and RoHS Compliant**



DESCRIPTION

The 17Y Series High Torque Step Motors offer a great value without sacrificing quality. These motors were designed to offer the highest possible torque while minimizing vibration and audible noise. A broad line of motor windings and stack lengths are available off-the-shelf, or the motors can be customized to fit your machine requirements. We can customize the winding to perfectly match your voltage, current, and maximum operating speed for maximum flexibility.

See Accessories on this website for optional motor adders, such as encoders, cables and connectors. Gearbox optionals can be found under Gearboxes.

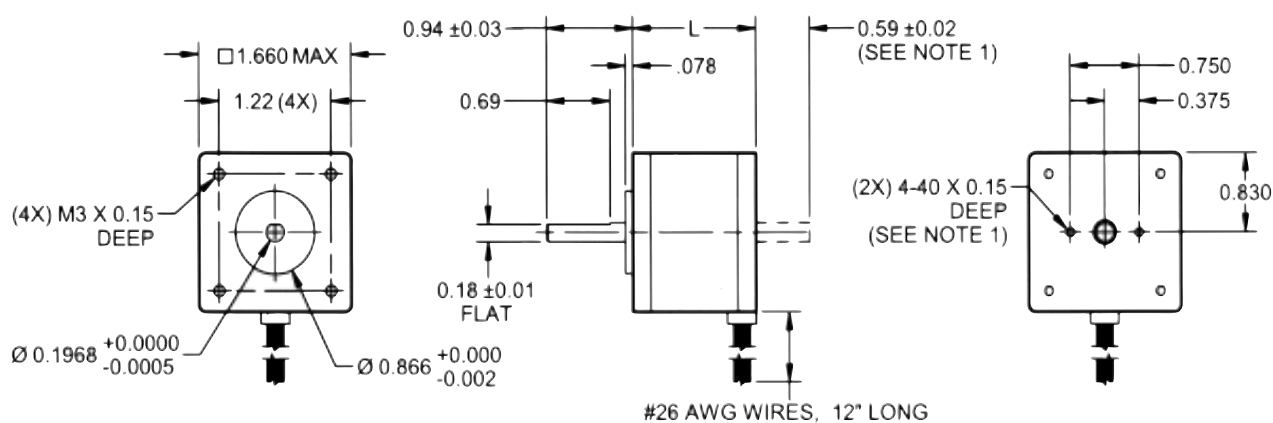
See compatible Drivers for the 17Y Series: MBC15081, and MBC25081TB

SPECIFICATIONS

Model #	NEMA Size	Bipolar Torque (oz-in)	Bipolar Current (A)	Bipolar Inductance (mH)	Rotor Inertia (oz-in-sec ²)	Shaft Diameter (in)	# of Lead Wires	Weight (lbs)	L Length (in)
17Y001S-LW4	17	24	0.40	30	.00028	.197	4	0.33	1.02
17Y101S-LW4	17	28	0.28	49	.00054	.197	4	0.44	1.34
17Y102S-LW4	17	28	0.71	10.7	.00054	.197	4	0.44	1.34
17Y201S-LW4	17	50	0.28	90	.00076	.197	4	0.62	1.57
17Y202S-LW4	17	50	0.85	10	.00076	.197	4	0.62	1.57
17Y301S-LW4	17	61	0.28	103	.00096	.197	4	0.77	1.89
17Y302S-LW4	17	61	0.85	11	.00096	.197	4	0.77	1.89
17Y402S-LW4	17	111	0.85	29	.00144	.197	4	1.10	2.36

Notes: All Shafts have a flat unless otherwise noted. The 7th character "S" denotes a single shaft, use "D" for double shaft. Double shafts include encoder mounting provisions. Custom cables, connectors, and windings are available upon request.

L010174



Note 1: Double shaft option only.

(All units are inches)

