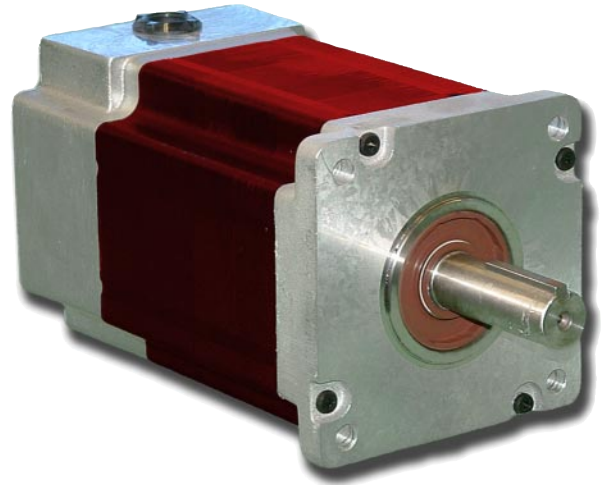


# 42K65 Series - IP65 Rated Sealed Stepper Motors



## FEATURES

- NEMA 42 Frame Size
- 1.8° Natural Step Angle
- Torque Ratings Up to 5700 oz.in.
- Sealed per IP65 for Splashproof
- High Acceleration and Increased Rotor Inertia
- 3 Stack Lengths
- Microstep Increments as Small as 0.0072° (with our MBC0825621 driver)
- 1.5% Typical Step Accuracy - Non Cumulative
- Rugged Construction
- Higher Temperature Characteristics
- CE Certified and RoHS Compliant



## DESCRIPTION

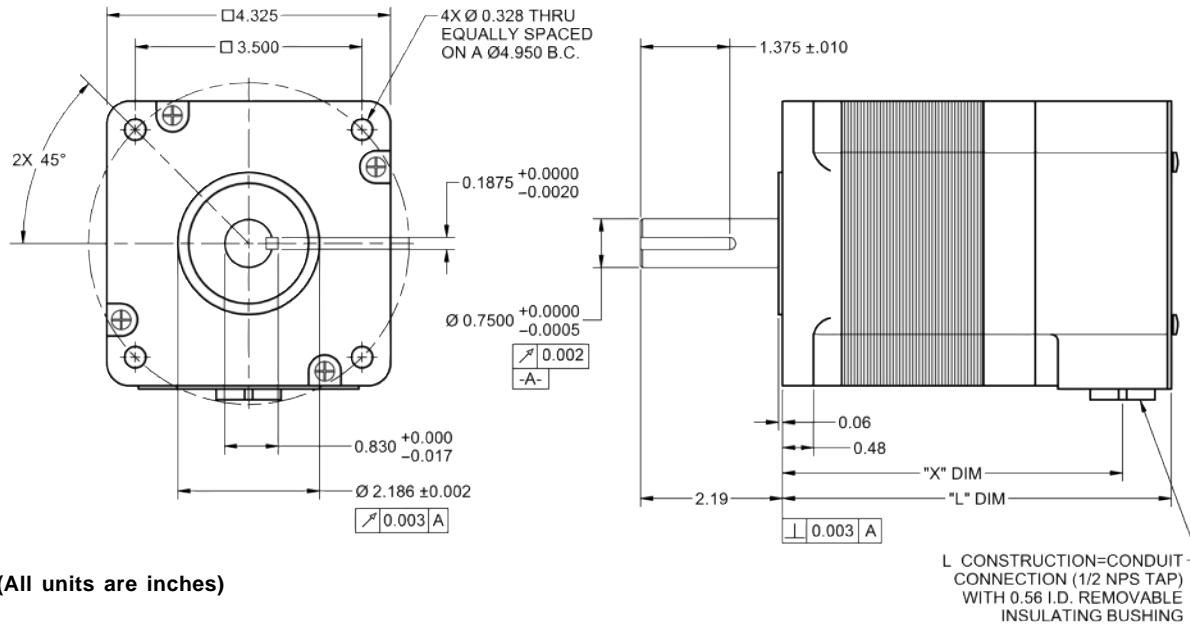
The 42K65 Series High Torque Stepper Motors use advanced magnetic technologies to provide significantly higher torque levels than what is available in standard (round) and high torque (square) motors. They are also sealed around the shaft and conduit opening making them splashproof and perfect for applications requiring a IP65 rated stepper. These motors are available in a variety of windings to meet any application specific requirement. The torque levels reached with this step motor line make them cost effective alternatives to servo motors in many applications. These motors can be specified in place of standard motors to reduce system size and cost, or increase system performance, without the need to go to larger sized motors or drivers.

**See Accessories on our website for optional motor adders such as encoders, brakes, cables, and connectors. For gearbox options, we see GBPH Series gearboxes. For compatible drivers, consider our popular MBC082561, MBC10641, MBC12101 and MLA10641 drivers, or Driver Packs.**

## SPECIFICATIONS

Model #	NEMA Size	Bipolar Torque (oz-in)	Series Current (A)	Unipolar Current (A)	Parallel Current (A)	Unipolar Inductance (mH)	Rotor Inertia (oz-in-sec <sup>2</sup> )	Shaft Diameter (in)	# of Terminals	Weight (lbs)	L Length (in)
42K65112S-CB8	42	2090	4.4	6.2	8.8	3.10	0.0783	0.75	8	11.0	5.2
42K65115S-CB8	42	2135	5.3	7.5	10.6	2.20	0.0783	0.75	8	11.0	5.2
42K65209S-CB8	42	3965	3.2	4.5	6.4	9.80	0.1546	0.75	8	18.4	7.2
42K65214S-CB8	42	4025	4.9	7.0	9.9	4.20	0.1546	0.75	8	18.4	7.2
42K65314S-CB8	42	5630	4.9	7.0	9.9	5.90	0.2293	0.75	8	25.7	9.2
42K65322S-CB8	42	5700	7.7	10.9	15.4	2.50	0.2293	0.75	8	25.7	9.2

L010429



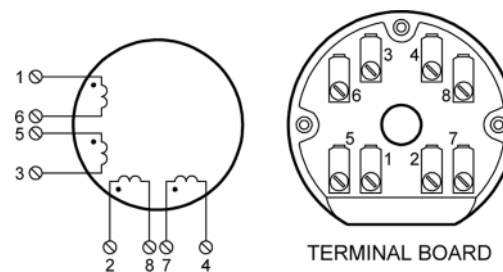
DIMENSIONS

WIRING INFORMATION

SPECIFICATIONS

Connection	Lead Wire Connection	Terminal #
4 - Lead Bipolar Series MBC or MLP Series	A	1
	A	3
	B	2
	B	4
	None	6 & 5
	None	8 & 7
4 - Lead Bipolar Parallel MBC or MLP Series	A	1 & 5
	A	3 & 6
	B	2 & 6
	B	4 & 8
6 - Lead Unipolar BLD, TM Series	Phase 1	1
	Phase 3	3
	Phase 2	2
	Phase 4	4
	Common Phase 1 & 3	6 & 5
	Common Phase 2 & 4	8 & 7

PART NUMBER	"X"	"L"
42X1XXS-CB8	4.46	5.20
42X2XXS-CB8	6.48	7.22
42X3XXS-CB8	8.49	9.23



Step Angle Accuracy:	+/- 1.5%	Insulation Type:	Class B
Resistance Accuracy:	+/- 10%	Insulation Resistance:	100M ohms @ 500VDC
Full Step Angle:	1.8°	Max Radial Force:	20lbs
Ambient Temperature:	-20° C - 40° C	Max Axial Force:	13lbs