

PCL601 USB - Programmable Controller

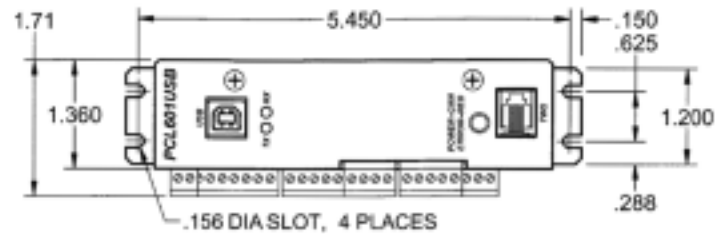
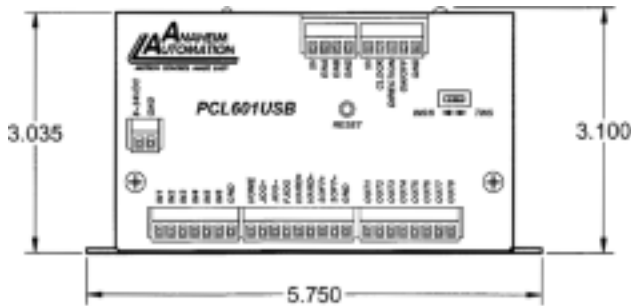


FEATURES

- **Cost Effective Motion Control Solution**
- **Easy to Use Windows Software Included**
- **Stored Program Capabilities**
- **24V Compatible Inputs**
- **0-5V Analog Input for Speed or Distance**
- **Encoder Feedback**
- **RS232 and RS485 Compatible**
- **Multi-Drop Capabilities**
- **Compact and Rugged Construction**



DIMENSIONS



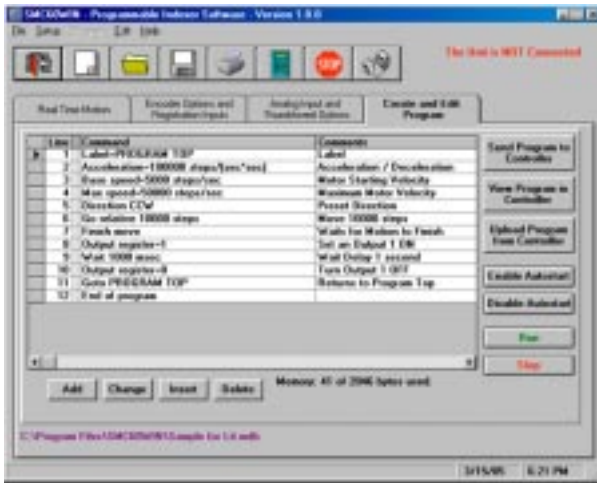
DESCRIPTION

The PCL601USB is a single-axis step motor controller containing 2 Kbytes of nonvolatile stored programming space and quadrature encoder feedback. The user can write the program and then have the PCL601USB autostart the program on power up. It provides flexible, independent control of stepper motors from computers, or any machine controller with a USB port. It is also capable of standalone operation, making it an embedded machine controller. The easy to use Windows software, SMC60WIN, can be used to directly control motion and to program the PCL601USB. The PCL601USB also has the ability for real time functions. "Direct Mode" is used to directly control motion for Real Time Movements through serial communication.

L010649



Includes Easy-Use-Software



Specifications

Power Requirements: 8-24VDC, 50/60Hz (0.5W Peak Power)

Nonvolatile Memory: 2KB of stored programming space

Baud Rate: 38,400 Baud, Fixed

Data Format: Half duplex, 1 start bit, 8 data bits, no parity, 1 stop bit

Communication Protocol: RS232 or RS485 selectable

Encoder Feedback: Quadrature, CHA, CHB, 5VDC Signal Compatibility

Controller Outputs: 8 Programmable Outputs, Open Drain Type, 40V, 100mA, +5VDC Output, 50mA

Controller Inputs: 6 Programmable Inputs
 Logic 0: 0 - 0.8VDC
 Logic 1: 3.5 - 24VDC
 Analog Input: 0 - 5VDC

Pulse Output Range: 1 - 50KHz, 10µs Negative Going Pulse Width

Additional Ordering Information

Model #	Number of Axis	Current Range (A)	Description	Input Voltage	Power (Watt)
DPMLP601	1	1.5 - 8.0	Line Powered Microstepping Bipolar Driver with an integrated PCL601	90 - 132 VAC	500
DPD75601	1	1.0 - 7.0	Line Powered Unipolar Driver with an integrated PCL601	90 - 265 VAC	300
DPN10601	1	1.5 - 10.0	Line Powered Microstepping Bipolar Driver with an integrated PCL601	90 - 265 VAC	300
TWS7	-	-	Seven decade thumbwheel switch for entering distance via external interface. (Accessory)	-	-
48SSD9TB	-	-	RS232 to RS485 converter for multiple axes communication. (Accessory)	-	-
AA9MFC-6	-	-	Serial port cable, required to communicate to PC. 6ft long. (Accessory)	-	-