

# TBI-TRH65 - Linear Guides

FEATURES

- Size: 65mm Linear Guide Rail
- Dynamic Load: Up to 273.55 kN
- Static Load: Up to 419.04 kN
- Rail Lengths Up to 4 Meters
- Custom Rail Sizes Available
- Matched Bearing Blocks
- End-Seal Options: Standard or Reinforced
- Pre-Load: Clearance, Standard, or Light



DESCRIPTION

TBI's high-quality linear guides deliver precision, durability, and affordability in one single package! Available in a 65mm size, this sleek, high-quality design incorporates the rail and the block together to provide a convenient, easy-to-use product. Little friction resistance allows for high accuracy and speed, while several preload options are available for increased rigidity and performance. They are offered in standard or custom lengths, and are ideal for dynamic loads up to 273.6 kN and static loads up to 419 kN.

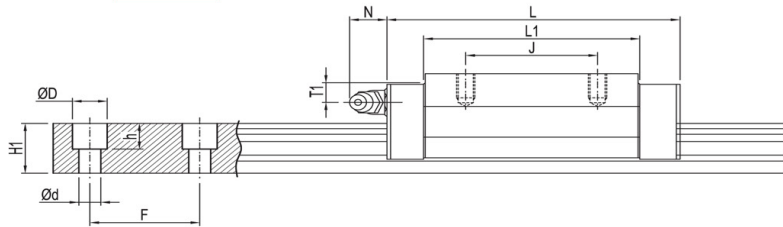
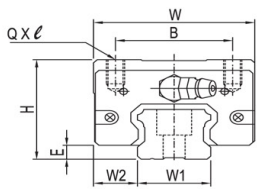
SPECIFICATIONS

Block Part Number	Fabrication Dimensions (mm)			Block Dimensions (mm)								Load Capacities (kN)		Static Moment (Nm)			Weight (lbs)
	H	W <sub>2</sub>	E	W	B	J	L	L1	QxL	T	N	C	C <sub>0</sub>	M <sub>x</sub>	M <sub>y</sub>	M <sub>z</sub>	
TBI-TRH65FE-N-Z0	90	53.5	14	170	142	110	256.6	206.5	M16x23	19.3	12.5	273.6	419.0	12950.7	12822.9	12822.9	25.0
TBI-TRH65VE-N-Z0	90	31.5	14	126	76	120	256.1	206.5	M16x20	19.3	12.5	273.6	419.0	12950.7	12822.9	12822.9	24.6
TBI-TRH65VL-N-Z0	90	31.5	14	126	76	70	197	147	M16x20	19	12.5	220.9	308.7	9542.6	6823.86	6823.86	19.0
TBI-TRH65FL-N-Z0	90	53.5	14	170	142	110	197	147	M16x23	37	12.5	220.9	308.7	9542.6	6823.86	6823.86	20.5

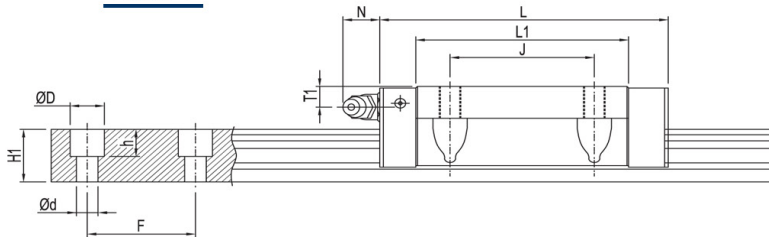
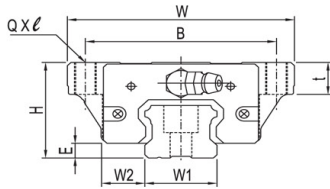
Rail Part Number	Rail Dimensions (mm)							Rail Length (mm)	Weight (lbs)
	W <sub>1</sub>	H <sub>1</sub>	F	D	d	d x D x h			
TBI-TR65N-0300-75-75	63	53	150	26	18	18 x 16 x 22	300	14.9	
TBI-TR65N-0500-25-25	63	53	150	26	18	18 x 16 x 22	500	24.9	
TBI-TR65N-0700-50-50	63	53	150	26	18	18 x 16 x 22	700	34.8	
TBI-TR65N-0900-75-75	63	53	150	26	18	18 x 16 x 22	900	44.7	
TBI-TR65N-1100-25-25	63	53	150	26	18	18 x 16 x 22	1100	54.7	
TBI-TR65N-1300-50-50	63	53	150	26	18	18 x 16 x 22	1300	64.6	
TBI-TR65N-1500-75-75	63	53	150	26	18	18 x 16 x 22	1500	74.5	
TBI-TR65N-1700-25-25	63	53	150	26	18	18 x 16 x 22	1700	84.5	
TBI-TR65N-1900-50-50	63	53	150	26	18	18 x 16 x 22	1900	94.4	
TBI-TR65N-2100-75-75	63	53	150	26	18	18 x 16 x 22	2100	104.4	
TBI-TR65N-2300-25-25	63	53	150	26	18	18 x 16 x 22	2300	114.3	
TBI-TR65N-2500-50-50	63	53	150	26	18	18 x 16 x 22	2500	124.2	
TBI-TR65N-2700-75-75	63	53	150	26	18	18 x 16 x 22	2700	134.2	
TBI-TR65N-2900-25-25	63	53	150	26	18	18 x 16 x 22	2900	144.1	
TBI-TR65N-3100-50-50	63	53	150	26	18	18 x 16 x 22	3100	154.1	
TBI-TR65N-3300-75-75	63	53	150	26	18	18 x 16 x 22	3300	164.0	
TBI-TR65N-3500-25-25	63	53	150	26	18	18 x 16 x 22	3500	173.9	
TBI-TR65N-3700-50-50	63	53	150	26	18	18 x 16 x 22	3700	183.9	
TBI-TR65N-3900-75-75	63	53	150	26	18	18 x 16 x 22	3900	193.8	
TBI-TR65N-4000L	63	53	150	26	18	18 x 16 x 22	4000	198.8	

L011033

**TRH-V**



**TRH-F**



**Force Dimensions**

