

TBI Motion Ballscrews DFV Series



FEATURES

- 16mm to 80mm Screw Diameters
- 4mm to 20mm Leads
- Dynamic Loads to to 22,423 kgf
- Static Loads up to 90,719 kgf
- Available in Right helix
- C7 Standard Accuracy
- P1 Standard Preload
- Other Accuracies and Preloads Available Upon Request

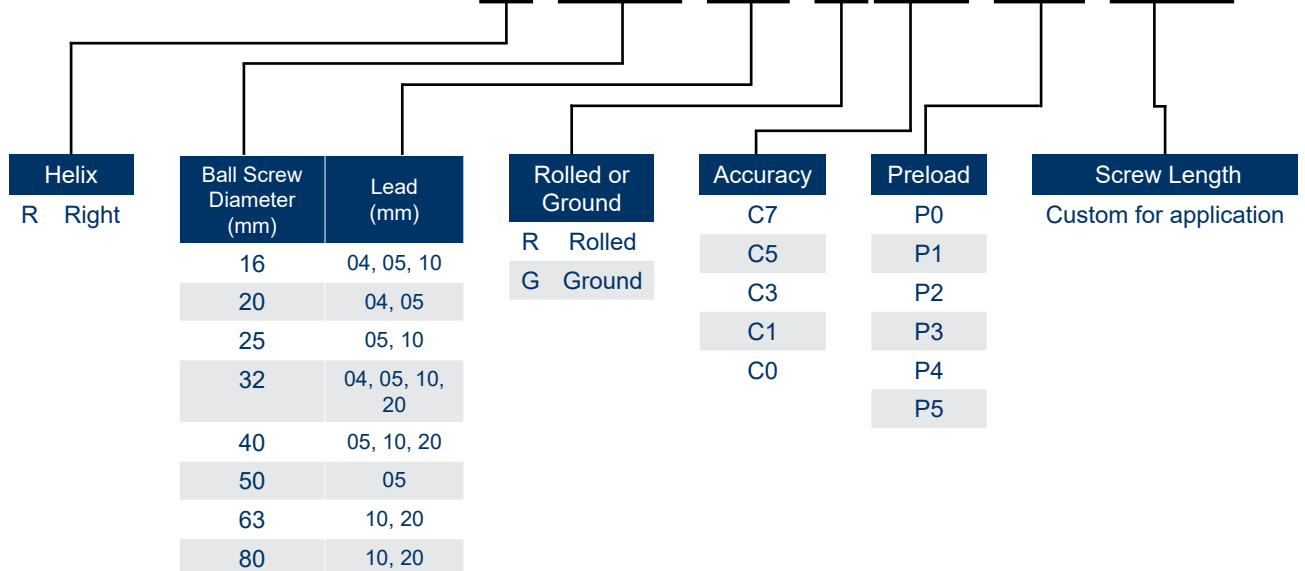


DESCRIPTION

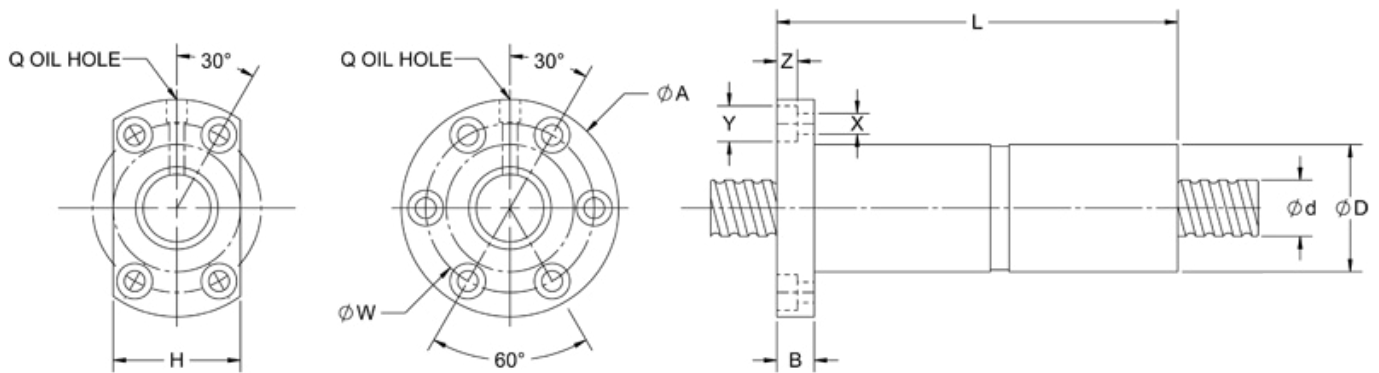
The DFV Series screw has a diameter of 16-80mm with a 4-20mm lead. This assembly provides a dynamic force of 22,423 kgf and a static forces up to 90,719 kgf. The maximum screw length is 7,000mm. The ends of the screw can be customized per your drawing. Please contact Anaheim Automation to discuss your specific requirements.

PART NUMBER LAYOUT

BSC-AAM-DFVR-016-04-RC7-P1-750



L011046



Units are in mm

DIMENSIONS AND SPECIFICATIONS

Model No.	d	l	Da	D	A	B	L	W	H	X	Y	Z	Q	n	Ca	Coa	K	H*	I: Lead		Da: Ball Dia.		n: Number of Circuits		K: Stiffness (kgf)		H*: Helix		Ca: Basic Dynamic Rating Load (kgf)		Coa: Basic Static Rating Load (kgf)							
BSC-AAM-DFVR-016-04	16	4	2.381	34	57	11	89	45	34	5.5	9.5	5.5	M6	3.8x1	931	2285	42	R																				
BSC-AAM-DFVR-016-05	16	5	3.175	40	63	11	113	51	42	5.5	9.5	5.5	M6	4.8x1	1614	3662	53	R																				
BSC-AAM-DFVR-016-10	16	10	3.175	40	63	11	106	51	42	5.5	9.5	5.5	M6	2.7x1	1008	2161	32	R																				
BSC-AAM-DFVR-020-04	20	4	2.381	40	60	10	94	50	40	4.5	8	4	M6	4.8x1	1247	3584	61	R																				
BSC-AAM-DFVR-020-05	20	5	3.175	44	67	11	112	55	52	5.5	9.5	5.5	M6	4.8x1	1814	4650	63	R																				
BSC-AAM-DFVR-025-05	25	5	3.175	50	73	11	105	61	52	5.5	9.5	5.5	M8	4.8x1	2017	5884	75	R																				
BSC-AAM-DFVR-025-10	25	10	6.35	68	102	15	130	84	82	9	14	8.5	M8	2.7x1	3040	6547	49	R																				
BSC-AAM-DFVR-032-04	32	4	2.381	54	81	12	94	67	64	6.6	11	6.5	M6	4.8x1	1517	5806	85	R																				
BSC-AAM-DFVR-032-05	32	5	3.175	58	85	12	106	71	64	6.6	11	6.5	M8	4.8x1	2249	7612	90	R																				
BSC-AAM-DFVR-032-10	32	10	6.35	74	108	15	186	90	82	9	14	9	M8	4.8x1	5620	14649	101	R																				
BSC-AAM-DFVR-032-20	32	20	6.35	74	108	16	200	90	82	9	14	8.5	M8	2.7x1	3509	8644	61	R																				
BSC-AAM-DFVR-040-05	40	5	3.175	67	101	15	109	83	72	9	14	8.5	M8	4.8x1	2468	9586	105	R																				
BSC-AAM-DFVR-040-10	40	10	6.35	82	124	18	188	102	94	11	17.5	11	M8	4.8x1	6316	18600	121	R																				
BSC-AAM-DFVR-040-20	40	20	6.35	82	124	18	200	102	90	11	17.5	11	M8	2.7x1	3935	10893	74	R																				
BSC-AAM-DFVR-050-05	50	5	3.175	80	114	15	115	96	82	9	14	8.5	M8	4.8x1	2698	12053	122	R																				
BSC-AAM-DFVR-063-10	63	10	6.35	108	154	22	195	130	110	14	20	13	M8	4.8x1	7860	30430	172	R																				
BSC-AAM-DFVR-063-20	63	20	9.525	122	180	28	220	150	130	18	26	17.5	M8	2.7x1	8162	24741	107	R																				
BSC-AAM-DFVR-080-10	80	10	6.35	130	176	22	195	152	132	14	20	13	M8	4.8x1	8593	38344	201	R																				
BSC-AAM-DFVR-080-20	80	20	9.525	143	204	28	340	172	148	18	26	18	M8	4.8x1	15103	57296	226	R																				

Units are in mm

*PLEASE NOTE - Each standard ball screw includes **one** nut. Additional nuts will be considered a custom request, and will require creation of a special part number.