

TBI Ball Screw Support Units

BF Series



FEATURES

- Fixed-Side Rectangular Type
- Ball Screw Diameter: 12mm to 50mm
- Input Shaft Diameter: 8mm to 40mm
- Allowable Axial Load: Up to 939Kgf
- Allowable Static Load: Up to 1388Kgf
- Maximum Speed: Up to 16,800RPM
- Applicable Screw Accuracy: C3, C5, or C7
- Low Profile Design
- Black Oxide Surface Treatment



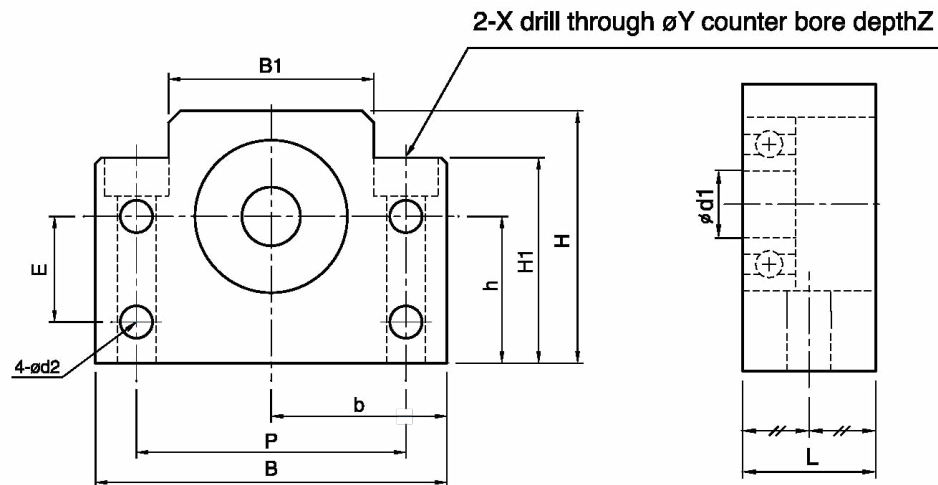
DESCRIPTION

The Rectangular-Type BF Supported-Side Support Unit Series are available to fit input shaft diameters ranging from 8mm to 40mm. These support units are compact in size and allow for easy installation. All support units come with angular contact bearings which are assembled with the correct preload and amount of lubrication. These support units have an allowable axial load up to 1834Kgf, allow static load up to 2119.7Kgf, and can handle speeds up to 16,800RPM (model dependent).

DIMENSIONS

Item	d1	L	B	H	b ± 0.02	h ± 0.02	B1	H1	E	P	d2	X	Y	Z	Allowable Axial Load (Kgf)	Allowable Static Load (Kgf)	Maximum Speed (RPM)
TBI-BSC-SU-BF10	8	20	60	39	30	22	34	32.5	15	46	5.5	6.6	10.8	5	195	239.0	16800
TBI-BSC-SU-BF12	10	20	60	43	30	25	34	32.5	18	46	5.5	6.6	10.8	1.5	217	275.1	15400
TBI-BSC-SU-BF15	15	20	70	48	35	28	40	38	18	54	5.5	6.6	11	6.5	240	315.7	13300
TBI-BSC-SU-BF17	17	23	86	64	43	39	50	55	28	68	6.6	9	14	8.5	413	550.2	11200
TBI-BSC-SU-BF20	20	26	88	60	44	34	52	50	22	70	6.6	9	14	8.5	428	604.3	10500
TBI-BSC-SU-BF25	25	30	106	80	53	48	64	70	33	85	9	11	17.5	11	709	942.6	8400
TBI-BSC-SU-BF30	30	32	128	89	64	51	76	78	33	102	11	14	20	13	939	1353	7000
TBI-BSC-SU-BF35	35	32	140	96	70	52	88	79	35	114	11	14	20	13	1466	1691.3	4200
TBI-BSC-SU-BF40	40	37	160	110	80	60	100	90	37	130	14	18	26	17.5	1834	2119.7	3710

UNITS: mm



L011178

Item	Ball Screw Diameter	Input Shaft Diameter		Snap Ring Groove		
Type BF	d	A	E	B	F	G
TBI-BSC-SU-BF10	12, 14, 15	8	10	7.6	7	0.9
TBI-BSC-SU-BF12	14, 15, 16	10	11	9.6	8	1.15
TBI-BSC-SU-BF15	18, 20	15	13	14.3	9	1.15
TBI-BSC-SU-BF17	20, 25	17	16	16.2	12	1.15
TBI-BSC-SU-BF20	25, 28, 30	20	16	19	12	1.35
TBI-BSC-SU-BF25	30, 32, 36	25	20	23.9	15	1.35
TBI-BSC-SU-BF30	36, 40	30	21	28.6	16	1.75
TBI-BSC-SU-BF35	40, 45	35	22	33	17	1.75
TBI-BSC-SU-BF40	50	40	23	38	18	1.75

